

**HAWAII TEACHER STANDARDS BOARD
COMMITTEE WORK SESSIONS AND BUSINESS MEETING**

**FRIDAY, September 16, 2016
Dole Cannery Meeting Room 158**

MINUTES

PRESENT:

Lisa DeLong	Terry Holck
Justin Mew	Les Murashige
Steve Nakasato	Beth Pateman for Donald Young
Roxane Stewart	Kerry Tom for Kathryn Matayoshi
Kariane Park Toyama	Felicia Villalobos
Susan Young for Lance Mizumoto	

ABSENT:

Louise Cayetano	Branden Kawazoe
Gerald M. Teramae	

STAFF:

Lynn Hammonds, Executive Director
Lorrin Toma, Data Processing Systems Analyst
Jill Agena, Secretary

CALL TO ORDER:

Chairperson Holck called the meeting to order at 1:18 p.m.

APPROVAL OF MINUTES:

(Villalobos/Murashige) The minutes of June 16, 2016, meeting were approved as written.

TOPIC: Executive Director's Report

DISCUSSION: Executive Director Hammonds submitted her report to the Board with no additions. She thanked the board for sponsoring the Troy Hutchings summit held September 15, 2016 at the University of Phoenix.

TOPIC: Teacher Education Committee

DISCUSSION: Pateman reported that the committee discussed:

- NBI 16-01: Adoption of Educational Testing Service (ETS) Teacher Leadership Assessment – Recommends approval
- NBI 16-02: Consideration of Continuing State Approval of Chaminade University of Honolulu's PK-K Teacher Education Preparation Program – Recommends approval

- NBI 16-03: Consideration of Letter of Intent from Kaho'iwai Educator Preparation Program to Develop an Elementary Education K-6 Program – Recommends approval
- NBI 15-37: Consideration of Full State Approval of Teach for America Educator Preparation Program – Recommends approval

TOPIC: Budget, Personnel, and Strategic Planning Committee

- DISCUSSION:** Murashige reported that the committee reviewed and discussed:
- NBI 16-04: Adoption of Strategic Plan – Recommends approval
 - NBI 16-05: Regarding HTSB Fees – Recommends approval

TOPIC: Working Lunch for All Members

- DISCUSSION:** Holck reported that during working lunch members reviewed and discussed:
- Educator Ethics Roundtable Discussion: Dr. Troy Hutchings
 - HTSB Code of Ethics
 - Model Code of Ethics
 - NBI 16-06: Hawaiian Language Immersion Licenses and Permits – Recommends approval
 - Staff Summary and Recommendation
 - Testimony in Support
 - NBI 14-31: Consideration of Revisions to Clarification of Requirements for the Teacher Leader License Field – Recommends approval
 - NBI 15-30: Approval of Revision to Meeting Schedule 2016-2017 – Recommends approval

TOPIC: Report out of Executive Session

- DISCUSSION:** Chairperson Holck reported out:
- Approval of Executive Session Minutes from June 16, 2016, meeting as written
 - NBI 16-07: License Affirmation
 - NBI 16-08: Evaluation of the Executive Director and Goals for 2016-2017 – Deferred until the October 7 board meeting
 - Consultation with Deputy Attorney General on legal and procedural matters

TESTIMONY, PETITIONS FROM THE PUBLIC: None.

NEW BUSINESS APPROVED: (See Attachments)

1. **NBI 14-31: Consideration of Revisions to Clarification of Requirements for the Teacher Leader License Field**
(Holck on behalf of the Committee of the Whole)
2. **NBI 15-30: Approval of Revision to Meeting Schedule 2016-2017**
(Holck on behalf of the Committee of the Whole)

3. **NBI 15-37: Housekeeping Revision to Consideration of Full State Approval of Teach for America Educator Preparation Program**
(Pateman on behalf of the Teacher Education Committee)
4. **NBI 16-01: Adoption of ETS Teacher Leader Assessment**
(Pateman on behalf of the Teacher Education Committee)
5. **NBI 16-02: Consideration of Continuing State Approval of Chaminade University of Honolulu's PK-K Teacher Educator Preparation Program**
(Pateman on behalf of the Teacher Education Committee)
6. **NBI 16-03: Consideration of Letter of Intent from Kaho'iwai Educator Preparation Program to Develop an Elementary Education K-6 Program**
(Pateman on behalf of the Teacher Education Committee)
7. **NBI 16-04: Adoption of Strategic Plan**
(Murashige on behalf of the Budget, Personnel and Strategic Planning Committee)
8. **NBI-16-05: Regarding HTSB Fees**
(Murashige on behalf of the Budget, Personnel and Strategic Planning Committee)
9. **NBI 16-06: Hawaiian Language Immersion Licenses and Permits**
(Holck on behalf of the Committee of the Whole)
10. **NBI 16-07: License Affirmation**
(Holck reported out of executive session)

ADJOURNMENT:

Chairperson Holck adjourned the meeting at 2:57 p.m.

RECORDER: _____

Jill Agena

DATE: September 16, 2016

TITLE: Clarification of Requirements for the Teacher Leader License Field

The Hawaii Teacher Standards Board approves the following regarding criteria for meeting job embedded experiences for the Teacher Leader license field:

Hawaii Department of Education or Charter School experience verified by a school administrator for any of the following experiences:

- curriculum or content specialist/coach;
- state office or complex area instructional or data coach;
- mentor teacher;
- department/grade level chair;
- service on school-wide, district or national level that develops leadership skills and benefits students, school community or the profession, eg., accreditation team, school turnaround team, instructional leadership team, etc. Service as a union faculty representative alone does not qualify an individual for the Teacher Leader license field.

The Board also directs the Executive Director to convene a panel to review the Educational Testing Service (ETS) Teacher Leader Assessment to determine its suitability for use in qualifying for the Teacher Leader field, and, if found suitable, to recommend a passing score to the Board for adoption. The panel shall include representatives from:

- Hawaii Department of Education, recommended by the Superintendent;
- Hawaii Charter Schools, recommended by the Charter School Commission Office;
- Hawaii Educator Preparation Providers;
- Hawaii State Teachers Association.

The meeting may be convened using an online platform.

Submitted by: Terry Lynn Holck

Referred to: Teacher Standards Committee

New Business Item 15-30 Rev

Introduced 4/15/2016

Approved 4/15/2016

Revised 9/16/2016

Approved 9/16/2016

TITLE: Hawaii Teacher Standards Board Meeting Schedule 2016-2017

The Hawaii Teacher Standards Board approves the following meeting schedule for 2016-2017:

Date	Meeting
September 15, 2016	Joint Ethics Training with Ethics Work Group, EPP and HSTA Representatives
September 16, 2016	September Board Meeting
October 7, 2016	October Board Meeting
November 18, 2016	November Board Meeting
January 20, 2017	January Board Meeting
February 13-17, 2017	February Board Members Attend HSTA Institute Days statewide
March 10, 2017	March Board Meeting
April 7, 2017	April Board Meeting
June 23, 2017	June Board Meeting

Submitted by: Terry Lynn Holck

Referred to: Committee of the Whole

TITLE: Consideration of Full State Approval of Teach for America Educator Preparation Program

The Hawaii Teacher Standards Board grants full approval to Teach for American Educator Preparation Program effective June 16, 2016 through December 31, 2018. This approval is based on a Council for Educator Preparation (CAEP) onsite review, their team's recommendation for accreditation, and the Inquiry Brief Commission of the CAEP Accreditation Council's decision to award full initial accreditation effective May 2, 2016 through June 30, 2023 with the following three weaknesses:

- Weakness in Quality Principle I, Component 1.3: The TFA-HI system for gauging readiness for taking full teaching responsibility is not consistently adequate.
- Weakness in Quality Principle I, Component 1.5: The faculty have not fully demonstrated the validity of their assessments.
- Weakness in Quality Principle II, Component 2.2: The faculty have not systematically incorporated evidence of program and candidate/completer outcomes into their decision-making process.

The unit must do one of the following to be eligible for continuing state approval:

- A national review must be scheduled no later than fall 2022 and the unit must obtain national accreditation prior to the expiration of CAEP's accreditation on June 30, 2023.
OR
- Implement a nationally normed performance assessment for all of the unit's teacher candidates no later than July 1, 2019. Currently the edTPA and the Educational Testing Service Praxis Performance Assessment for Teachers (PPAT) are adopted for use by Hawaii Educator Preparation Programs.

The unit must submit an annual report to the HTSB including evidence toward resolving all of the above weaknesses. Failure to include evidence could result in suspension of state approval. Once the unit successfully removes all weaknesses they will be eligible for five additional years through December 31, 2023, of state approval without an additional onsite review.

The unit may recommend candidates for the following license fields:

- Elementary Education K-6
- English 6-12
- Mathematics 6-12
- Science 6-12
- Social Studies 6-12
- World Languages 6-12

A letter will be sent to the unit informing them of the Board's state approval.

Submitted by: Terry Lynn Holck

Referred to: Teacher Education Committee

TITLE: Adoption of Educational Testing Service (ETS) Teacher Leadership Assessment

The Hawaii Teacher Standards Board approves use of the ETS Teacher Leadership Assessment currently in use by the State of Georgia until such time that this assessment is made available for use by all states, anticipated to be within the next school year.

In order to pass the Teacher Leadership assessment, a test taker must submit a scorable response for each of the six tasks. A scorable response is one that addresses the guiding prompts/questions, is not determined by certified raters to be off-topic or missing a required artifact, and receives a score greater than "0". The total number of points possible for all six tasks combined is 48. A minimum of 31 total points is required to pass the assessment.

Hawaii Licensed teachers may use this assessment as an option to add the field of Teacher Leader to their existing license in addition to verification of a leadership role that supports teaching and learning for a minimum of four semesters within the previous five years.

Information will be posted on the HTSB website and the Department of Education, Hawaii Charter Commission, Hawaii Association of Independent Schools and Hawaii Educator Preparation Programs will be informed of adoption of this new assessment.

Submitted by: Terry Lynn Holck

Referred to: Teacher Education Committee

TITLE: Consideration of Continuing State Approval of Chaminade University of Honolulu's PK-K Teacher Education Preparation Program

The Hawaii Teacher Standards Board grants full continuing state approval to Chaminade University of Honolulu's Early Childhood PK-K Educator Preparation Program effective September 16, 2016 through June 30, 2022. This approval is based on the onsite review and Full Accreditation (Renewal) by the Montessori Accreditation Council for Teacher Education (MACTE), an accrediting body recognized by the US Department of Education.

The program is responsible for scheduling a national review and attaining continuing renewal by MACTE prior to June 30, 2022, to be eligible for consideration to renew this program's state approval.

The program may recommend candidates for the following license fields:

Early Childhood Education PK-K

This program must be included in Chaminade University of Honolulu's Education Department's annual report to the HTSB.

A letter will be sent to the unit informing them of the Board's state approval.

Submitted by: Terry Lynn Holck

Referred to: Teacher Education Committee

**TITLE: Consideration of Letter of Intent from Kaho`iwai Educator Preparation Program
to Develop an Elementary Education K-6 Program**

The Hawaii Teacher Standards Board accepts Kaho`iwai's Letter of Intent to develop an Elementary Education K-6 educator preparation program.

Although elementary education is not a declared shortage area Kaho`iwai prepares teachers for work in Hawaiian culturally focused schools, which is a current need throughout the state.

A letter shall be sent to Kaho`iwai informing them of the Board's acceptance of their Letter of Intent.

Submitted by: Terry Lynn Holck

Referred to: Teacher Education Committee

TITLE: Adoption of Strategic Plan

The Hawaii Teacher Standards Board adopts the 2016-2017 Strategic Plan, which is attached.

Submitted by: Terry Lynn Holck

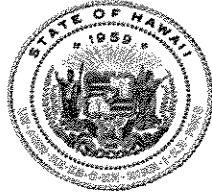
Referred to: Budget, Personnel and Strategic Planning Committee



HAWAI'I TEACHER
STANDARDS BOARD

Strategic Plan

July 1, 2011 – June 30, 2017



**The Honorable David Y. Ige
Governor, State of Hawai'i**

Hawaii Teacher Standards Board

Teacher Members:

Terry Lynn Holck, Chairperson, Common Core & Technology Integration Resource Teacher, Nānākuli-Wai'anae Complex Area

Felicia Villalobos, Vice Chairperson, Teacher, Wilcox Elementary School

Louise Cayetano, Teacher, Fern Elementary School

Branden Kawazoe, School Counselor, Kaiser High School

Kariane Park Toyama, Teacher, Waihee Elementary School

Roxane Stewart, Teacher, Ka `Umeke Ka`eo Public Charter School

School Principal Members:

Lisa DeLong, Kailua Intermediate School

Justin Mew, Kaiser High School

Steve Nakasato, Pearl Ridge Elementary School

Hawaii Association of Independent Schools:

Gerald Teramae, Island Pacific Academy

Ex-Officio Members/Designees:

Arlene Lee-Williams for Lance Mizumoto, Chairperson, Hawaii Board of Education

Kerry Tom for Kathryn Matayoshi, Superintendent, Hawaii Department of Education

Dr. Beth Pateman for Dr. Donald Young, Dean, College of Education, University of Hawaii-Manoa

Public Member:

Les Murashige

Susan Young

Hawai'i Teacher Standards Board Professional Staff

Lynn Hammonds, Executive Director
Christina Simpson, Licensing Specialist
Christopher Erickson, Licensing Specialist

2011- 2017 Strategic Plan Hawai`i Teacher Standards Board

Table of Contents

INTRODUCTION.....	15
OVERVIEW.....	15
GOAL 1: Support rigorous, progressive teacher preparation and licensure standards and policies.	15
GOAL 2: Enhance efficient customer service with Aloha.....	16
GOAL 3: Strengthen relationships with stakeholders.	16
GOAL 4: Develop operations which maximize effectiveness.	17
TIMELINE FOR PLAN IMPLEMENTATION.....	18

INTRODUCTION

In 2010 the Hawaii Teacher Standards Board started an intensive self-study that has resulted in strengthened operations, revised policy, and a renewal of confidence and trust from teachers and the public. The Board has made significant progress in achieving four main goals:

- Support rigorous, progressive teacher preparation and licensure standards and policies.
- Enhance efficient customer service with Aloha.
- Strengthen relationships with stakeholders.
- Develop operations which maximize staff effectiveness.

This Strategic Plan provides a framework to guide the Board committees and Executive Director to accomplish these goals. This plan was implemented July 1, 2011 and extends to June 30, 2017.

OVERVIEW

History of HTSB

Act 240 of the Eighteenth Legislature, State of Hawaii, established the Hawaii Teacher Standards Board in 1995. The Board originally consisted of nine members, including four licensed teachers, three educational officers, the chairperson of the Board of Education, and the Dean of the University of Hawaii College of Education. That membership has been expanded to include two additional teachers and two members of the public. The HTSB has full responsibility for establishing teacher, school counselor and school librarian licensing standards, and issuing licenses to education professionals who meet the criteria. The Board issues three tiers of licenses and two kinds of special permits. The Board approves Hawaii based state approved teacher, counselor and librarian education programs (SATEP); reports to the federal government on licensing and teacher education programs; and approves, validates and adopts licensure tests. The Board also participates in efforts related to teacher quality, including support for National Board for Professional Teaching Standards (NBPTS) candidates. In addition, the Board establishes penalties for teacher misconduct that may result in the suspension or revocation of a license.

Vislon and Mission

The HTSB envisions a highly esteemed public education system with rigorous professional teacher standards that foster student success. Our mission is to collaboratively set high teacher licensing and credentialing standards to:

- Provide every child with qualified teachers.
- Promote professionalism and teaching excellence.
- Build public confidence in the teaching profession.
- Provide more accountability to the public.

GOAL 1: Support rigorous, progressive teacher preparation and licensure standards and policies.

- Objectives
 - Generate revised state standards that reflect rigor and current best practice based on review of new national teacher education and teacher performance standards.
 - Organize and revise statute, administrative rules and policies so they are streamlined and user friendly.

- Evaluate Professional Fitness procedures to ensure public school keiki are protected.
- Revise existing licensure tests and additional options for validating content expertise.
- Revision of license renewal criteria and audit processes based on feedback.
- Revision of provisional teacher preparation program approval process with enhanced training for reviewers and inclusion of out of state reviewers.
- Indicators
 - Revised State Approval of Teacher Education Standards
 - Revised Hawaii Teacher Performance Standards
 - Revised HRS
 - Revised Administrative rules
 - Revised policies which align with statute and administrative rules
 - Revised policies and procedures for investigation and evaluation of Professional Fitness files.
 - Revised licensure tests and implementation of additional methods of validating content expertise.
 - Revised SATEP Manual for provisional approval of new units and programs.

GOAL 2: Enhance efficient customer service with Aloha.

- Objectives
 - Acknowledge telephone and email inquiries within two business days and resolve issues within five business days.
 - Process incoming documents within two business days including notification of receipt.
 - Improve percentage of customers marking service as “professional, friendly, and knowledgeable”.
 - Development of Operations Handbook for HTSB staff for reference and to better meet needs of customers.
- Indicators
 - Call/email ticket tracking showing time to resolution
 - Audit of mail log and online record tracking showing email notification of receipt of documents
 - Tally of responses to online customer service survey
 - HTSB Operations Handbook

GOAL 3: Strengthen relationships with stakeholders.

- Objectives
 - Provide opportunities for teachers and teacher education faculty to give direct feedback to the Board to influence policy. (e.g., Work Groups, Standard Setting Panels, NBPTS candidate support)
 - Utilize electronic media to effectively publicize HTSB information to teachers.
 - Increase and sustain regular communication with the Legislative Education Committees, the Department of Education, Hawaii State Teacher’s Association, state approved teacher education programs.
 - Comprehensive survey of applicants and licensees at three year mark of Strategic Plan for feedback on successes and areas for improvement.
- Indicators
 - Number of teachers and teacher educators serving on work groups, panels and as NBPTS support providers
 - Record of memorandum, newsletters, reports, New Business Items, Executive Director reports posted on website
 - Record of contacts with stakeholders showing increase over time
 - Survey results and analysis of data for program improvements.

GOAL 4: Develop operations which maximize effectiveness.

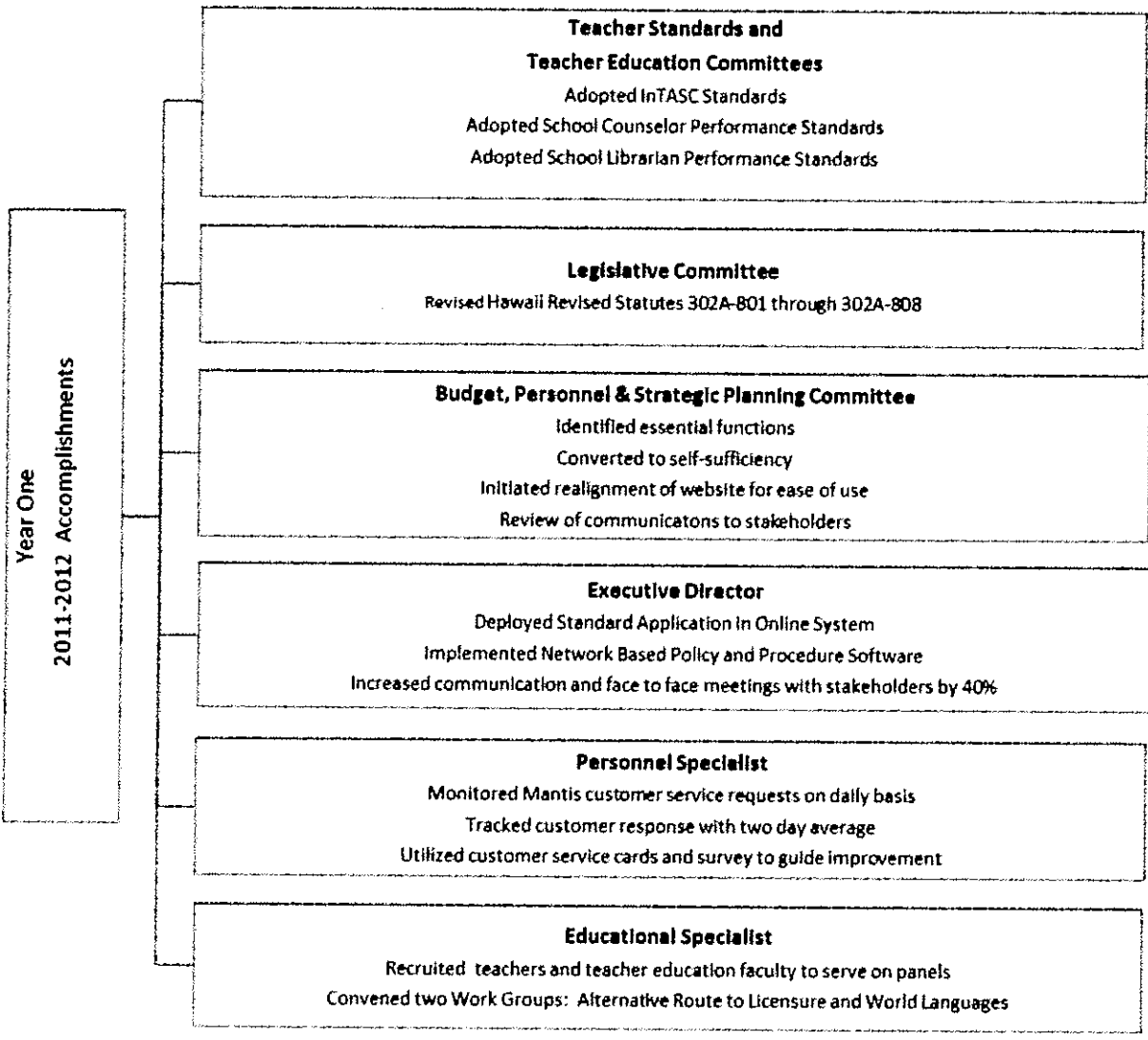
➤ Objectives

- Deploy remaining phases in online system and monitor for usability and value.
- Interface with other organizations to work toward data interface.
- Review of essential and non-essential functions.
- Conduct internal audit of operational procedures and staff effectiveness.
- Deploy policy and procedure manual on networked server to expedite communication among staff and to ensure policies are consistently and appropriately implemented.
- Review license fee structure and budget requirements to enable HTSB to become self-sufficient based on license fees.

➤ Indicators

- Quarterly report to Board on status on online system phase deployments
- Participation in data warehouse or interface among P-20 stakeholders and SATEP
- Termination of non-essential functions
- Report of audit on operations, procedures and staffing
- Posted policies, staff meeting agendas, memos, emails on policy/procedure program
- Revised fee structure which fully funds HTSB operations.

TIMELINE FOR PLAN IMPLEMENTATION



Year Two
2012-2013 Accomplishments

Teacher Standards Committee
Reviewed license renewal process and audit
Reviewed implementation plan for new standards

Teacher Education and Teacher Standards Committees
Reviewed tiered licensure structure
Reviewed and made recommendations for licensure tests and additional options for validating content expertise
Reviewed licensure fields and levels
Reviewed license renewal process and audit

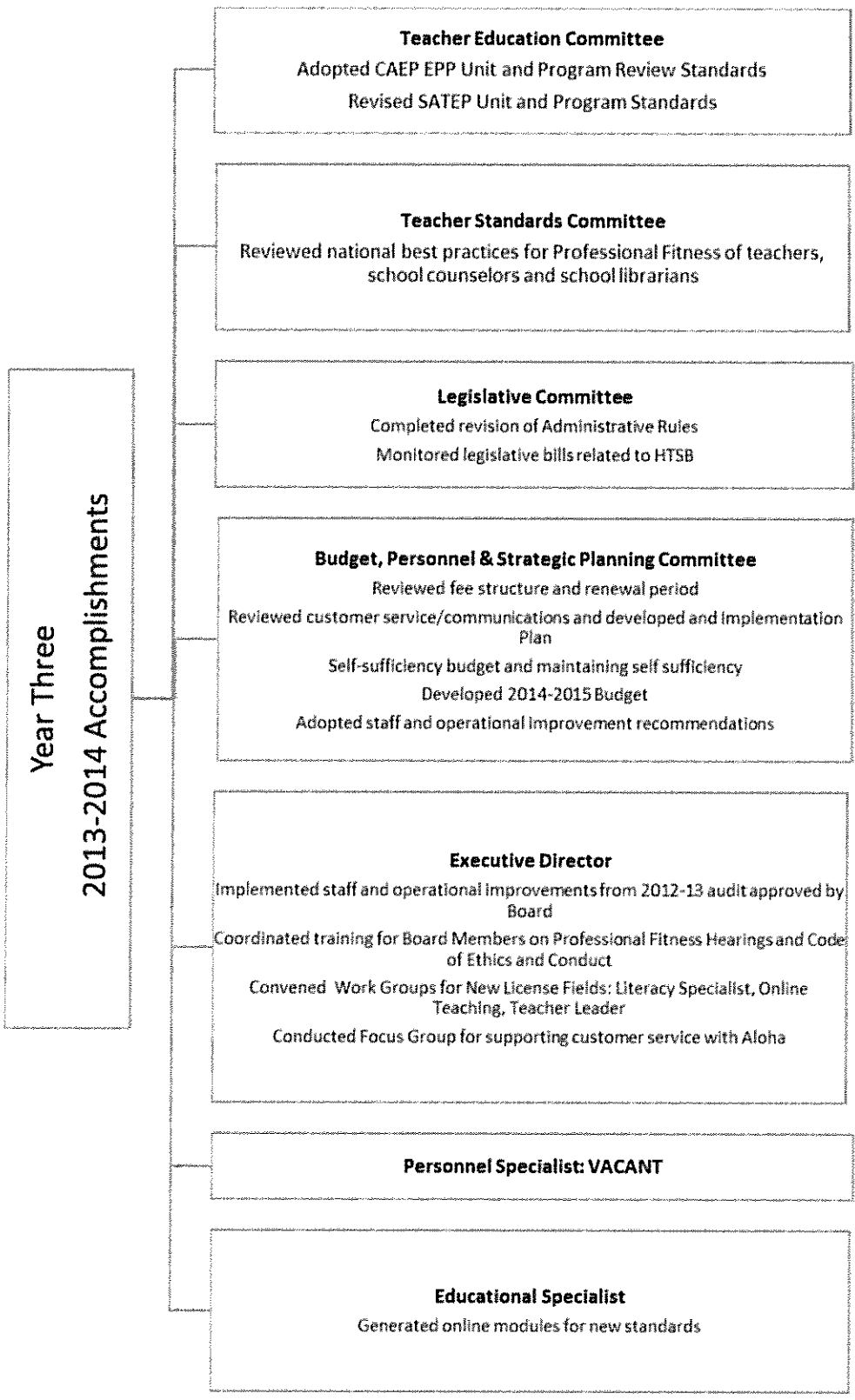
Legislative and By-Laws Committee
Revised Administrative Rules

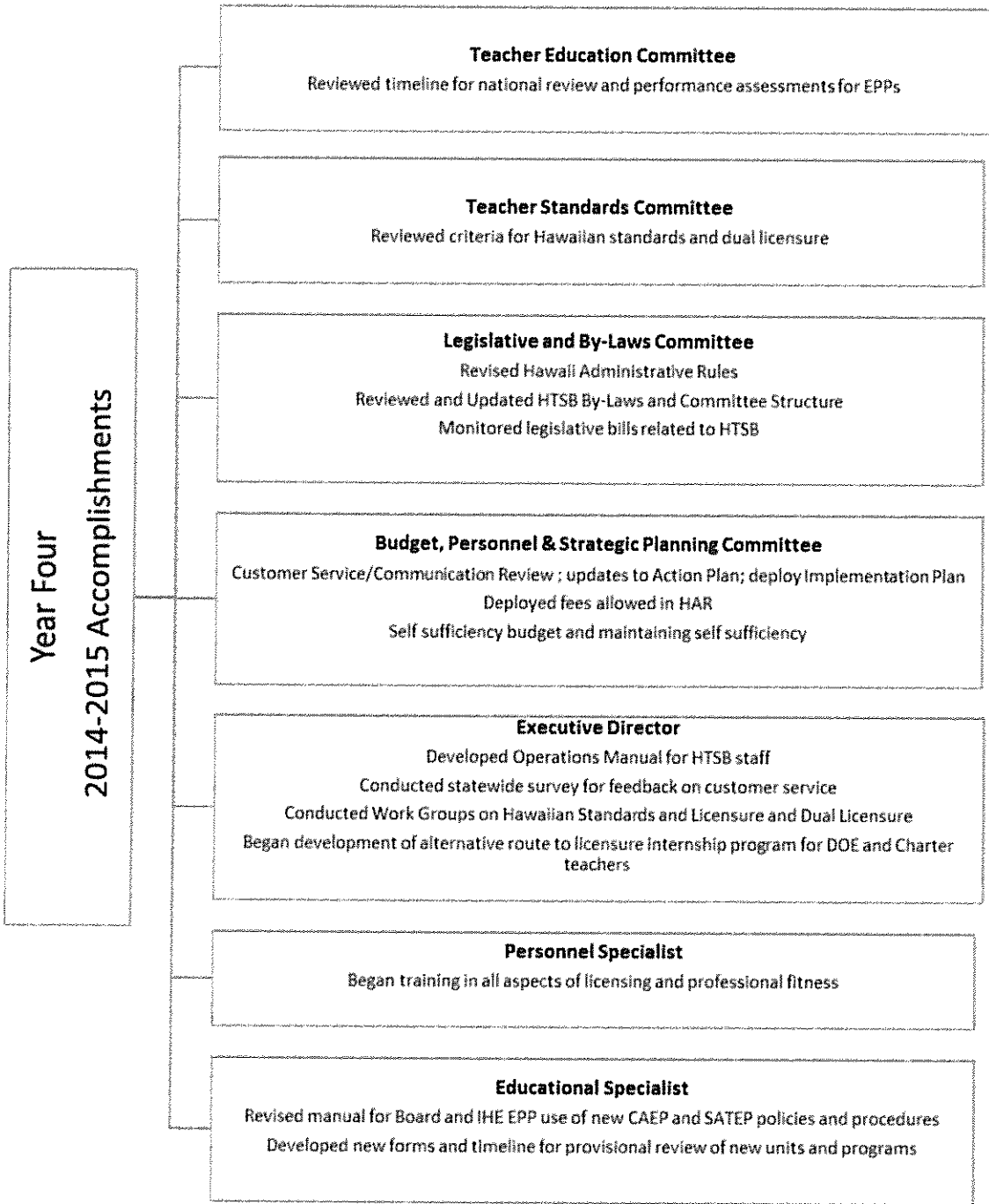
Budget, Personnel & Strategic Planning Committee
Reviewed fee structure and renewal period
Self sufficiency budget and maintaining self sufficiency
Established a data bank on NBIs
Reviewed customer service/communications and developed an Action Plan
Developed 2013-2014 Budget Develop policy and procedures for evaluation of Executive Director

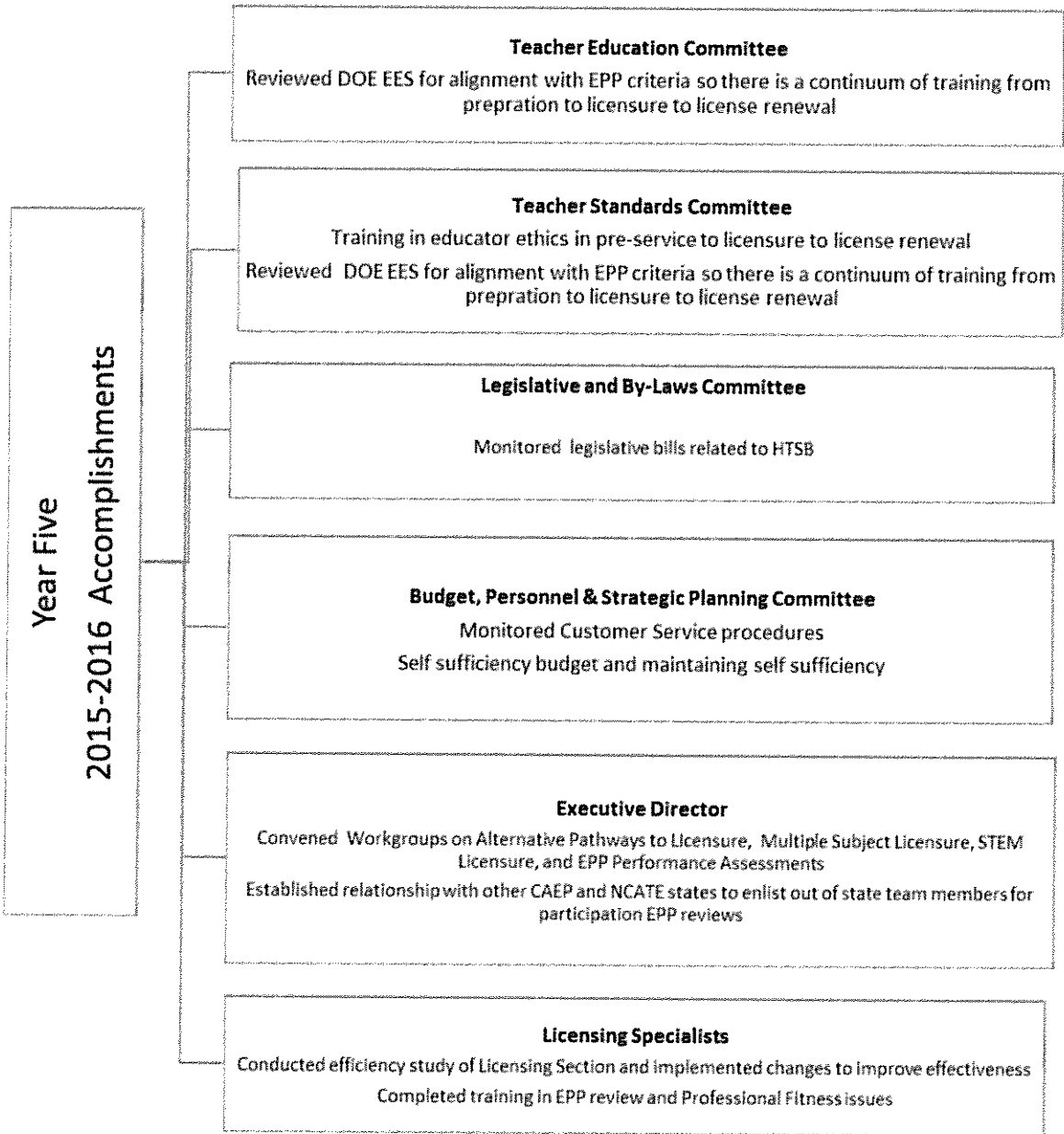
Executive Director
Conducted internal audit of operational procedures and staff effectiveness and provided recommendations to BPSPC
Evaluated online system functionality and support

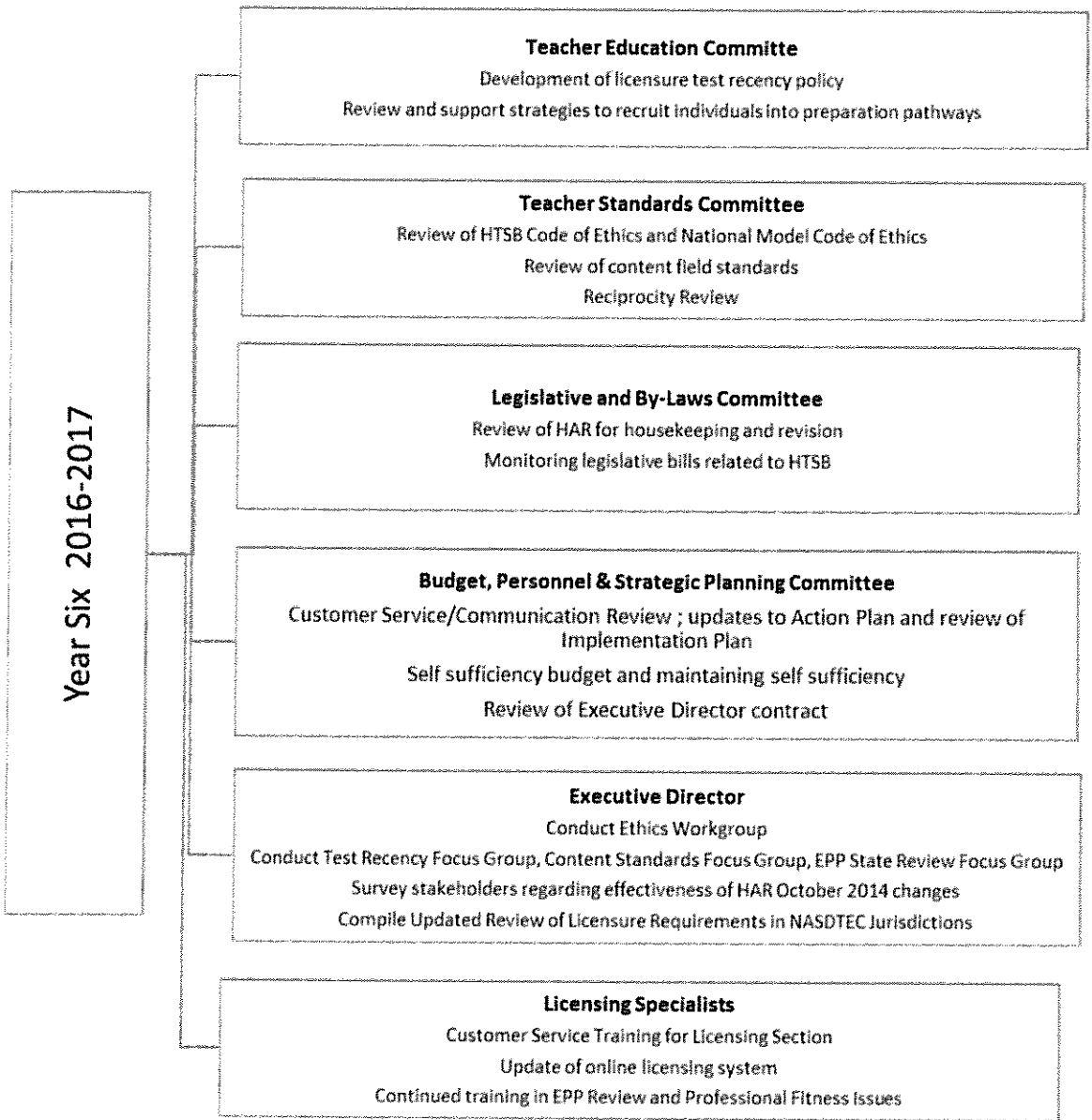
Educational Specialist
Conducted training for Hawaii SATEP on teacher dispositions

Legislative and By-Laws and Teacher Education Committees
Proposed content for Administrative Rules relating to standards for approving teacher education programs









TITLE: Regarding HTSB Fees

The Hawaii Teacher Standards Board adopts the following policy regarding license and permit fees:

1. Effective July 1, 2017, annual license and permit fees will be \$54;
2. The board will review fees in Hawaii Administrative Rules §8-54-2.4 for future adjustment.

Rationale: The current annual license and permit fee of \$48 was set by the HTSB in 1996 and has never been adjusted. Through Fiscal Year (FY) 2012 the HTSB received general funds for salary and benefits for both licensing specialists and three licensing clerk positions as well as for National Board candidate support and Educator Preparation Program review support, approximately \$270,000 annually. Beginning in FY13, the HTSB relinquished all general funds to rely solely on its special fund. HTSB has no control over personnel costs, which have risen steadily due to negotiated salary and benefits. Annual monitoring of staffing requirements due to automation and changes in work assignments have reduced staff from thirteen in 2011 to six in 2016. The HTSB will continue to review revenue sources and expenditures to provide the best possible service to Hawaii licensees and applicants.

Submitted by: Terry Lynn Holck

Referred to: Budget, Personnel and Strategic Planning Committee

TITLE: Hawaiian Language Immersion Licenses and Permits

The Hawaii Teacher Standards Board approves the following criteria for awarding a special permit or provisional license to individuals identified by the Office of Hawaii Education as eligible to fill critical shortage vacancies in Kaia 'ōlelo-Kaiapuni Hawai 'i, Hawaiian Language Immersion, and Hawaiian Knowledge classrooms:

1. Allow a special permit in the fields of Kaia 'ōlelo-Kaiapuni Hawai 'i, Hawaiian Language Immersion, and Hawaiian Knowledge for up to five years, with one renewal, to an individual who:
 - a) Holds the minimum of a high school diploma;
 - b) Is assessed in the Hawaiian language by an Hawaiian Language Immersion educator preparation program (HLI EPP) or by the Office of Hawaiian Education (OHE);
 - c) Completes twenty-four hours of induction by an HLI EPP or the OHE;
 - d) Submits a professional development plan on how the individual will obtain licensure, to be monitored by the OHE or a HLI EPP;
 - e) Meets Professional Fitness requirements;
 - f) Pays the fee to practice the profession of teaching.
2. The Office of Hawaiian Education will submit a report to the HTSB on progress of the individuals employed under this exception as of September 16, 2016, on February 1 and July 1 of each year beginning on February 1, 2017, on a form provided by HTSB staff.
4. During the 2016-2017 school year, the Executive Director will reconvene the Hawaiian Workgroup to make recommendations for amendment of the Administrative Rules on a special permit and limited provisional license for the Hawaiian fields.

Submitted by: Terry Lynn Holck
Referred to: Committee of the Whole

TITLE: License Affirmation

The Hawaii Teacher Standards Board affirms the attached licenses and permits.

Submitted by: Terry Lynn Holck

Referred to:

Initial Licenses

			Advanced Licenses		
Type	Last Name	First Name	Teaching Fields	Effective Date	Expiration Date
AL	Abenoja	Rosa	Elementary Education K - 6 Spanish 6 - 12 Special Education K - 12	8/1/2016	6/30/2027
AL	Borg	Steven	Physical Education K - 12	7/1/2016	6/30/2026
AL	Burress	Stephanie	Elementary Education K - 6 English 6 - 8 Reading K - 12 Teaching English to Speakers of Other Languages K - 6	7/1/2016	6/30/2026
AL	Davis	Alicia	Elementary Education K - 6	8/1/2016	6/30/2027
AL	Dressler	Michelle	Art 6 - 12 Social Studies 6 - 12	8/1/2016	6/30/2027
AL	Gallagher	Amy	Elementary Education K - 6	8/1/2016	6/30/2027
AL	Iijima-Agena	Reiko	Elementary Education K - 6 Special Education 6 - 8 Special Education K - 6	7/1/2016	6/30/2026
AL	Nader	Maria	English 6 - 12 Special Education K - 12	7/1/2016	6/30/2026
AL	Peebles	Cynthia	Mathematics 6 - 12 Social Studies 6 - 8	7/1/2016	6/30/2026
AL	Regis	Troy	Elementary Education K - 6 Mathematics 6 - 8	7/1/2016	6/30/2026
AL	Sharon	McCubbin	Early Childhood Education PK - 3 Elementary Education K - 6 Literacy Specialist K - 6 Reading K - 6 Teaching English to Speakers of Other Languages P - 12	8/1/2016	6/30/2027
AL	St Pierre	Laura	Elementary Education K - 6	7/1/2016	6/30/2026
			Provisional Licenses		
Type	Last Name	First Name	Teaching Fields	Effective Date	Expiration Date
PL	Abdullahi	Tonie	Elementary Education K - 6	7/1/2016	6/30/2019

PL	Ablog	Ian Rick	CTE-Industrial and Engineering Technology 6 - 12	7/1/2016	6/30/2021
PL	Abrahamson	Leif	Elementary Education K - 6	7/1/2016	6/30/2019
PL	Aguilar	Brian	English 6 - 12	7/1/2016	6/30/2019
PL	Ahuna	Jamie	Hawaiian Knowledge 6 - 12 Kaia'oleloKaiapuni Hawai'i P - 12	7/1/2016	6/30/2019
PL	Ainise	Potauaine	Elementary Education K - 6 Special Education K - 6	7/1/2016	6/30/2019
PL	Ainuu	Jacosa	Music 6 - 12	7/1/2016	6/30/2019
PL	Aiona	Sunshine	English 6 - 12 Reading 6 - 12	7/1/2016	6/30/2019
PL	Alana	Lorinda	Elementary Education K - 6	7/1/2016	6/30/2019
PL	Albritton	Shane	Social Studies 6 - 12	7/1/2016	6/30/2019
PL	Alexander	Michiko	Elementary Education K - 6	8/1/2016	6/30/2020
PL	Armstrong	Cassandra	Early Childhood Education PK - 3	8/1/2016	6/30/2020
PL	Ayers	Anjelica	Elementary Education K - 6	7/1/2016	6/30/2019
PL	Baba	Trevor	English 6 - 12	8/1/2016	6/30/2020
PL	Balala	Michelle	Elementary Education K - 6	7/1/2016	6/30/2019
PL	Baldwin	Timothy	Social Studies 6 - 12	8/1/2016	6/30/2020
PL	Barton	Kathryn	Elementary Education K - 6	7/1/2016	6/30/2019
PL	Belay	Chantelle	Social Studies 6 - 12	7/1/2016	6/30/2019
PL	Belville	Katie	Elementary Education K - 6	8/1/2016	6/30/2020
PL	Bennett	Yvonne	SPED - Mild/Moderate PK - 3	7/1/2016	6/30/2019
PL	Benvenuto	Jessica	Elementary Education K - 6	8/1/2016	6/30/2020
PL	Bevilacqua	Elisse	Elementary Education K - 6	7/1/2016	6/30/2019
PL	Bien	Melissa	Mathematics 6 - 8	8/1/2016	6/30/2020
PL	Bonnetty	Mary	Elementary Education K - 6	7/1/2016	6/30/2019
PL	Branstetter	Amy	Elementary Education K - 6 Special Education K - 12	7/1/2016	6/30/2019
PL	Butler	Sandra	English 6 - 12	7/1/2016	6/30/2019
PL	Carino	Evelyn	Mathematics 6 - 12	7/1/2016	6/30/2019

PL	Castellani	Dante	Social Studies 6 - 12	8/1/2016	6/30/2020
PL	Chao	Catherine	Mathematics 6 - 12	7/1/2016	6/30/2019
PL	Cheung	Katrina	School Counselor K - 12	7/1/2016	6/30/2019
PL	Chronis	Angela	Social Studies 6 - 12	8/1/2016	6/30/2020
PL	Chun	Sandra	Elementary Education K - 6	7/1/2016	6/30/2019
PL	Chung	Michelle	SPED - Deaf/Hard of Hearing K - 12	8/1/2016	6/30/2020
PL	Clausner	Charles	Elementary Education K - 6	7/1/2016	6/30/2019
PL	Cornelison	Victoria	Elementary Education K - 6	7/1/2016	6/30/2019
PL	Daley	Natalie	Elementary Education K - 6	8/1/2016	6/30/2020
PL	Daly	B'lane	Elementary Education K - 6	7/1/2016	6/30/2019
PL	D'Auria	Meicha	Elementary Education K - 6 Special Education K - 12	7/1/2016	6/30/2019
PL	Davis	Stephanie	Mathematics 6 - 12	7/1/2016	6/30/2019
PL	De la Cruz	Musashi	English 6 - 12	7/1/2016	6/30/2019
PL	Deatherage	Michael	English 6 - 12	7/1/2016	6/30/2019
PL	Delaries	Megan	Elementary Education K - 6	8/1/2016	6/30/2020
PL	Delos Reyes	John	Elementary Education K - 6	7/1/2016	6/30/2019
PL	DiMartino	John	Social Studies 6 - 12	7/1/2016	6/30/2019
PL	Distad	Andrew	SPED - Severe/Profound K - 12	7/1/2016	6/30/2019
PL	D'Occhio	Amanda	Elementary Education K - 6	7/1/2016	6/30/2019
PL	Dominguez	Dillon	Hawaiian Knowledge 6 - 12 Kaia'oleloKaiapuni Hawai'i P - 12	7/1/2016	6/30/2019
PL	Donoghue	Liam	Elementary Education K - 6	8/1/2016	6/30/2020
PL	Dougherty	Maya	School Counselor K - 12	7/1/2016	6/30/2019
PL	Dugo	Brandi	Elementary Education K - 6 Kaia'oleloKaiapuni Hawai'i PK - 3	7/1/2016	6/30/2019
PL	Durbin-Matrone	Ayla	Elementary Education K - 6 SPED - Mild/Moderate K - 12	8/1/2016	6/30/2020

PL	Durham	Susan	Elementary Education K - 6 Special Education P - 12	7/1/2016	6/30/2019
PL	Early	Timothy	Elementary Education K - 6 Social Studies 6 - 12	8/1/2016	6/30/2020
PL	Ebanez	Erika	Mathematics 6 - 12	7/1/2016	6/30/2019
PL	Edwards	Cassandra	Social Studies 6 - 12	8/1/2016	6/30/2020
PL	Estep	Courtney	Social Studies 6 - 12	7/1/2016	6/30/2019
PL	Ezaki	Jennifer	SPED - Mild/Moderate 6 - 12	8/1/2016	6/30/2020
PL	Farmer	Crystal	SPED - Mild/Moderate K - 12	7/1/2016	6/30/2019
PL	Fernandez	Ambar	Special Education K - 12	7/1/2016	6/30/2019
PL	Fetner	Natahli	Elementary Education K - 6	8/1/2016	6/30/2020
PL	Fields	JoHannah	Elementary Education K - 6 Mathematics 6 - 8 Social Studies 6 - 8	7/1/2016	6/30/2019
PL	Fong	Jaime	School Counselor K - 12	8/1/2016	6/30/2020
PL	Fortson	Ashley	Elementary Education K - 6 Special Education K - 6	7/1/2016	6/30/2019
PL	Fraga	Noel	Elementary Education K - 6	7/1/2016	6/30/2019
PL	Fujino	Kacie	Elementary Education K - 6	7/1/2016	6/30/2019
PL	Fujitani	Valerie	School Counselor K - 12	7/1/2016	6/30/2019
PL	Gallo	Briana	Elementary Education K - 6 Special Education K - 6	7/1/2016	6/30/2019
PL	Gaudino	Elizabeth	Music K - 12	7/1/2016	6/30/2019
PL	Gilbert	Thomas	Elementary Education K - 6	7/1/2016	6/30/2019
PL	Glenn	Alexandra	Elementary Education K - 6	8/1/2016	6/30/2020
PL	Godden	Lihau	Science 6 - 12	7/1/2016	6/30/2019
PL	Gonzalez	Jordan	Mathematics 6 - 8	8/1/2016	6/30/2020
PL	Gorresen	Brenna	Early Childhood Education PK - 3	8/1/2016	6/30/2020
PL	Guaglione	Mark	History 6 - 12	7/1/2016	6/30/2019
PL	Hagan	Pamula	Elementary Education K - 6	8/1/2016	6/30/2020
PL	Hamaguchi	Taylor	Elementary Education K - 6	8/1/2016	6/30/2020

PL	Hashizaki	Kylie	CTE-Natural Resources K - 12	8/1/2016	6/30/2020
PL	Hatakeyama	Laureen	Elementary Education K - 6	7/1/2016	6/30/2019
PL	Hauck	Lauren	Social Studies 6 - 12	7/1/2016	6/30/2019
PL	Hayashi	Keijiro	School Counselor K - 12	7/1/2016	6/30/2019
PL	Henderson	Hilaree	Social Studies 6 - 12	8/1/2016	6/30/2020
PL	Hernandez	Crystal	Elementary Education K - 6	7/1/2016	6/30/2019
PL	Heu	Cheryl	Science 6 - 12	8/1/2016	6/30/2020
PL	Hickey	Jacquelyn	English 6 - 12	7/1/2016	6/30/2019
PL	Hinton	Amy	Elementary Education K - 6	7/1/2016	6/30/2019
PL	Hironaka	Susan	Elementary Education K - 6 Music K - 6	7/1/2016	6/30/2019
PL	Howes	Andrea	Art 6 - 12	7/1/2016	6/30/2019
PL	Howick	Nikki	Elementary Education K - 6	8/1/2016	6/30/2020
PL	Hudrlik	Lindsey	English 6 - 12	7/1/2016	6/30/2019
PL	Hui	Katelyn	Special Education K - 6	7/1/2016	6/30/2019
PL	Huyer	Kimberly	English 6 - 8 Mathematics 6 - 8 Science 6 - 8 Social Studies 6 - 8	7/1/2016	6/30/2019
PL	Jagger	Katherine	Biology 6 - 12	7/1/2016	6/30/2019
PL	James	Natalie	Social Studies 6 - 12	7/1/2016	6/30/2019
PL	Jardin	Gavin	Physical Education 6 - 12	8/1/2016	6/30/2020
PL	Jenners	Angela	Social Studies 6 - 12	7/1/2016	6/30/2019
PL	Kaaihue	Chassidy	Elementary Education K - 6 Special Education K - 6	7/1/2016	6/30/2019
PL	Kabbeko	Margaret	English 6 - 12	7/1/2016	6/30/2019
PL	Kahawaii	Tara Marie	Mathematics 6 - 12	7/1/2016	6/30/2019
PL	Kalehuawehe	Kamaleikuuipookalani	Kaia'oleloKaiapuni Hawai'i K - 6	7/1/2016	6/30/2019
PL	Kari	Odo	SPED - Mild/Moderate PK - 3	7/1/2016	6/30/2019
PL	Kastein	Kalika	Elementary Education K - 6	7/1/2016	6/30/2019
PL	Kato	Krichelle	School Counselor K - 12	7/1/2016	6/30/2019
PL	Kawelo	Azure Dee	English 6 - 12 Reading 6 - 12	7/1/2016	6/30/2019
PL	Kelson	Kellen	Hawaiian Knowledge 6 - 12 Kaia'oleloKaiapuni	7/1/2016	6/30/2019

			Hawai'i 6 - 12		
PL	Kesi-Tiumalu	Priscilla	School Counselor K - 12	7/1/2016	6/30/2019
PL	Kim-O'Ferrell	Christina	Elementary Education K - 6	8/1/2016	6/30/2020
PL	Klossner	Naomi	Special Education K - 6	7/1/2016	6/30/2019
PL	Koehler	Malie	Elementary Education K - 6	7/1/2016	6/30/2019
PL	Koenig	Paul	Biology 6 - 12	8/1/2016	6/30/2020
PL	Koja	Cassandra	Elementary Education K - 6	8/1/2016	6/30/2020
PL	Krahn	Nathan	SPED - Mild/Moderate 6 - 12	7/1/2016	6/30/2019
PL	Kroness	Emily	Special Education K - 12	7/1/2016	6/30/2019
PL	Kuroda	Kristyn	Elementary Education K - 6	7/1/2016	6/30/2019
PL	Lawrenz	Yasuko	Elementary Education K - 6	8/1/2016	6/30/2020
PL	Le	Linda	Elementary Education K - 6	7/1/2016	6/30/2019
PL	Leachman	Elizabeth	Elementary Education K - 6	7/1/2016	6/30/2019
PL	Legaspi	Koryne Graciela	Social Studies 6 - 12	7/1/2016	6/30/2019
PL	Leinonen	Travis	Mathematics 6 - 12	7/1/2016	6/30/2019
PL	Lekkerkerk	Alyssa	Elementary Education K - 6 Special Education K - 6	7/1/2016	6/30/2019
PL	Long	Samantha	Mathematics 6 - 12	7/1/2016	6/30/2019
PL	LU	NINGNING	Mathematics 6 - 12	7/1/2016	6/30/2019
PL	Lucero	Sarah	Elementary Education K - 6 Special Education K - 6	7/1/2016	6/30/2019
PL	Lum	Tyson	Mathematics 6 - 12	7/1/2016	6/30/2019
PL	Ly	Justine	Elementary Education K - 6 SPED - Mild/Moderate K - 12	7/1/2016	6/30/2019
PL	Macy	Esther	Elementary Education K - 6	8/1/2016	6/30/2020
PL	Maemori	Jennerra	Elementary Education K - 6	7/1/2016	6/30/2019
PL	Maeshiro	Chloe	Elementary Education K - 6	7/1/2016	6/30/2019
PL	Malcolm	Olivia	Elementary Education K - 6	8/1/2016	6/30/2020
PL	Maon	Faye	Elementary Education K - 6	7/1/2016	6/30/2019

PL	Marshall	Therese	Elementary Education K - 6 Special Education K - 6	8/1/2016	6/30/2020
PL	Martin	Michael	SPED - Mild/Moderate 6 - 12	7/1/2016	6/30/2019
PL	Mateja	Kristen	Elementary Education K - 6 Special Education K - 6	7/1/2016	6/30/2019
PL	Matsumoto	Jonathan	Elementary Education K - 6 Special Education K - 12	8/1/2016	6/30/2020
PL	Matthews	Daniel	Science 6 - 12	7/1/2016	6/30/2019
PL	McCardle	Brett	Elementary Education K - 6 SPED - Mild/Moderate K - 12	8/1/2016	6/30/2020
PL	McCormick	Meghan	Social Studies 6 - 12	7/1/2016	6/30/2019
PL	Meyerson	Holly	Elementary Education K - 6	7/1/2016	6/30/2019
PL	Migdale	Lawrence	Elementary Education K - 6	8/1/2016	6/30/2020
PL	Miles	Jenefer	Social Studies 6 - 12	8/1/2016	6/30/2020
PL	Miller	Cassandra	Mathematics 6 - 12	8/1/2016	6/30/2020
PL	Moe	Fianna	Elementary Education K - 6	8/1/2016	6/30/2020
PL	Moraif	Aubrey	English 6 - 12	7/1/2016	6/30/2019
PL	Moriyama	Avis	Elementary Education K - 6	8/1/2016	6/30/2020
PL	Motosue	Josiah	School Counselor K - 12	7/1/2016	6/30/2019
PL	Nagamine	Sarah Ann	Elementary Education K - 6	7/1/2016	6/30/2019
PL	Nakahara	Courtney	Elementary Education K - 6	7/1/2016	6/30/2019
PL	Nakamitsu	Mari	School Counselor K - 12	8/1/2016	6/30/2020
PL	Nakanishi	Krystina	Elementary Education K - 6	7/1/2016	6/30/2019
PL	Nguyen	Sherry	Early Childhood Education PK - 3 Elementary Education K - 6	7/1/2016	6/30/2019
PL	Nichols	Chloe	Physical Education K - 12	8/1/2016	6/30/2020
PL	Nord	Julia	Special Education K - 12	7/1/2016	6/30/2019
PL	Oberlander	Keil	Social Studies 6 - 12	8/1/2016	6/30/2020
PL	Okeefe	Margaret	Elementary Education K - 6 Special Education K - 6	8/1/2016	6/30/2020

PL	Ono	Jesse	Mathematics 6 - 12	7/1/2016	6/30/2019
PL	Orong	Zyna Karl	School Counselor K - 12	8/1/2016	6/30/2020
PL	Otsuka	Roxane	Elementary Education K - 6	7/1/2016	6/30/2019
PL	Oyama	Pierson	School Counselor K - 12	7/1/2016	6/30/2019
PL	Packham	Colin	Social Studies 6 - 12	7/1/2016	6/30/2019
PL	Pang	Chadwick	Social Studies 6 - 12	7/1/2016	6/30/2019
PL	Paranada	Joshua	Social Studies 6 - 12	7/1/2016	6/30/2019
PL	Parent	Devanne	Mathematics 6 - 12	7/1/2016	6/30/2019
PL	Parker	Kera	Mathematics 6 - 12	7/1/2016	6/30/2019
PL	Patel	Kasha	Early Childhood Education PK - 3	7/1/2016	6/30/2019
PL	Peay	Brittney	Drama/Theatre Arts 6 - 12	7/1/2016	6/30/2019
PL	Pennant	Patrigna	Elementary Education K - 6	8/1/2016	6/30/2020
PL	Pennington	Kayla	Elementary Education K - 6	7/1/2016	6/30/2019
PL	Perry	Matthew	Kaia'oleloKaiapuni Hawai'i K - 6	7/1/2016	6/30/2019
PL	Porter	Jennifer	Science 6 - 12	8/1/2016	6/30/2020
PL	Potgeter	Ashley	SPED - Mild/Moderate 6 - 12	7/1/2016	6/30/2019
PL	Prideaux	Ro	Art 6 - 12 Teaching English to Speakers of Other Languages 6 - 12	8/1/2016	6/30/2020
PL	Principato	Tristen	Elementary Education K - 6	7/1/2016	6/30/2019
PL	Pruitt	Sara	Mathematics 6 - 8 Science 6 - 8	8/1/2016	6/30/2020
PL	Ramirez	Kaylan	Mathematics 6 - 12	7/1/2016	6/30/2019
PL	Rapier	Courtney	Elementary Education K - 6 Special Education K - 6	7/1/2016	6/30/2019
PL	Rearick	Alexander	Spanish K - 12	7/1/2016	6/30/2019
PL	Reed	Rain	Elementary Education K - 6 Hawaiian Language Immersion K - 12	8/1/2016	6/30/2020
PL	Reeh	Cassie	Elementary Education K - 6	7/1/2016	6/30/2019
PL	Rehart	Anne	SPED - Mild/Moderate 6 - 12	7/1/2016	6/30/2019
PL	Richmond	Peter	Social Studies 6 - 12	7/1/2016	6/30/2019

PL	Riefenhauser	Jenna	Elementary Education K - 6 Reading Specialist K - 6 Special Education K - 6	8/1/2016	6/30/2020
PL	Roback	Jenna	Elementary Education K - 6	7/1/2016	6/30/2019
PL	Roberts	Courtney	Elementary Education K - 6	7/1/2016	6/30/2019
PL	Robertson	Ashley	Elementary Education K - 6	7/1/2016	6/30/2019
PL	Robinson	Suzanne	Art K - 12 Special Education 6 - 12	7/1/2016	6/30/2019
PL	Rodrigues	Ronela	Mathematics 6 - 12	8/1/2016	6/30/2020
PL	Roles	Kendall	Elementary Education K - 6 Special Education K - 6	7/1/2016	6/30/2019
PL	Roth	Kelly	Elementary Education K - 6 English 6 - 8 Special Education K - 12	8/1/2016	6/30/2020
PL	Ruble	Kristen	Science 6 - 12	7/1/2016	6/30/2019
PL	Ruelas	Victoria	Biology 6 - 12	8/1/2016	6/30/2020
PL	Russell	Donald	Elementary Education K - 6	8/1/2016	6/30/2020
PL	Ryan	Jamie	Earth and Space Science 6 - 12 Mathematics 6 - 12	8/1/2016	6/30/2020
PL	Sagapolutele	Shannon	Social Studies 6 - 12	7/1/2016	6/30/2019
PL	Sammon	Erin	School Counselor K - 12	7/1/2016	6/30/2019
PL	Sarmiento	Camille	Elementary Education K - 6	7/1/2016	6/30/2019
PL	Schimmelfennig	Chadley	Elementary Education K - 6	8/1/2016	6/30/2020
PL	Schroeder	Makenzie	Elementary Education K - 6 English 6 - 8 Special Education K - 12	7/1/2016	6/30/2019
PL	Seaman	Aiyani	Early Childhood Education PK - 3	8/1/2016	6/30/2020
PL	Shankar	Surina	Special Education K - 12	7/1/2016	6/30/2019
PL	Shearon	Audrey	Elementary Education K - 6	7/1/2016	6/30/2019
PL	Sheffield	Katherine	English 6 - 12	8/1/2016	6/30/2020
PL	Shiroma	Whitney	CTE-Arts and Communication Vocational 6 - 12	7/1/2016	6/30/2019
PL	Shiroma	Koren	Elementary Education	7/1/2016	6/30/2019

			K - 6		
PL	Silva	Moses	Elementary Education K - 6	8/1/2016	6/30/2020
PL	Smith	Stephen	Elementary Education K - 6 Spanish 6 - 12 Teaching English to Speakers of Other Languages K - 12	8/1/2016	6/30/2020
PL	Souki	Vanessa	Social Studies 6 - 12	7/1/2016	6/30/2019
PL	Spadoni	Lindsey	English 6 - 12	8/1/2016	6/30/2020
PL	Spencer	Malaea	School Counselor K - 12	8/1/2016	6/30/2020
PL	Steck	Morgan	Early Childhood Education PK - 3 Special Education PK - 3	8/1/2016	6/30/2020
PL	Stignei	Robyn	Health 6 - 12	7/1/2016	6/30/2019
PL	Stoddart	Amy	Elementary Education K - 6	8/1/2016	6/30/2020
PL	Subiono	George	SPED - Mild/Moderate 6 - 12	7/1/2016	6/30/2019
PL	Tamai	Lindsey	Elementary Education K - 6	7/1/2016	6/30/2019
PL	Tatsuno	Maile	Science 6 - 12	7/1/2016	6/30/2019
PL	Tehero	Mindy	SPED - Deaf/Hard of Hearing K - 12	7/1/2016	6/30/2019
PL	Tejada	Maria	SPED - Mild/Moderate K - 6	7/1/2016	6/30/2019
PL	Thomson	Brieanna	Elementary Education K - 6 Special Education K - 6	7/1/2016	6/30/2019
PL	Thorne	Lesley	Mathematics 6 - 12	8/1/2016	6/30/2020
PL	Tripp	Kanila	CTE-Arts and Communication 6 - 12	7/1/2016	6/30/2019
PL	Trugillo	Christina	Elementary Education K - 6	8/1/2016	6/30/2020
PL	Tsui	Alyson	Mathematics 6 - 12	7/1/2016	6/30/2019
PL	Tuck-Ringwalt	Norine	SPED - Mild/Moderate K - 12	7/1/2016	6/30/2019
PL	Tuss	Jennifer	Physical Education K - 12	8/1/2016	6/30/2020
PL	Vercillo	Jessica	Early Childhood Education PK - 3	8/1/2016	6/30/2020
PL	Wade	Sarah	Art K - 12	8/1/2016	6/30/2020
PL	Wagoner	Samantha	Elementary Education K - 6	7/1/2016	6/30/2019
PL	Warne	Rebecca	Elementary Education K - 6 Special Education K - 6	7/1/2016	6/30/2019

PL	Warren	Diana	Science 6 - 12	7/1/2016	6/30/2019
PL	Watanabe	Tory	Social Studies 6 - 12	7/1/2016	6/30/2019
PL	Wengronowitz	Tara	Elementary Education K - 6	7/1/2016	6/30/2019
PL	Wert	John	Science 6 - 12	8/1/2016	6/30/2020
PL	West	Angela	Early Childhood Education PK - 3	7/1/2016	6/30/2019
PL	Whiting	K. Raina	Elementary Education K - 6	7/1/2016	6/30/2019
PL	Wicklund	Casie	Elementary Education K - 6	8/1/2016	6/30/2020
PL	Wilkinson	William	English 6 - 12	7/1/2016	6/30/2019
PL	Williams	Taylor	Elementary Education K - 6	7/1/2016	6/30/2019
PL	Williams	Zachary	English 6 - 12	7/1/2016	6/30/2019
PL	Winters	Carrie	Elementary Education K - 6	8/1/2016	6/30/2020
PL	Wong	Selina	SPED - Mild/Moderate PK - 3	7/1/2016	6/30/2019
PL	Wong	Linda	Elementary Education K - 6	7/1/2016	6/30/2019
PL	Wong	Gregg	Science 6 - 12	8/1/2016	6/30/2020
PL	Woods	Camille	Elementary Education K - 6 Science 6 - 8	8/1/2016	6/30/2020
PL	Wright	Rachel Anne	Elementary Education K - 6 Teaching English to Speakers of Other Languages K - 12	7/1/2016	6/30/2019
PL	Yoshitsugu	Liane	School Counselor K - 12	7/1/2016	6/30/2019
PL	Zaniboni	Chelsea	Science 6 - 12	7/1/2016	6/30/2019
			Standard Licenses		
Type	Last Name	First Name	Teaching Fields	Effective Date	Expiration Date
SL	Appleton	Sondra	CTE-Business Vocational 6 - 12	8/1/2016	6/30/2022
SL	Balogh	Magdeline	Special Education K - 12	7/1/2016	6/30/2021
SL	Callahan	Michael	History 6 - 12 Mathematics 6 - 8 Science 6 - 8	8/1/2016	6/30/2022
SL	Cambra	Darron	English 6 - 12	7/1/2016	6/30/2021
SL	Caronna-Penhollow	Steven	Special Education K - 12	8/1/2016	6/30/2022
SL	Cook	Amy	Elementary Education K - 6	8/1/2016	6/30/2022

SL	Frye	Allison	Elementary Education K - 6 Special Education K - 12	8/1/2016	6/30/2022
SL	Fuller	Christine	English 6 - 12	8/1/2016	6/30/2022
SL	Funkhouser	Erin	Elementary Education K - 6	7/1/2016	6/30/2021
SL	Funtanilla	Rachelle	Ilocano 6 - 12	7/1/2016	6/30/2021
SL	Grant	Ryan	Elementary Education K - 6	7/1/2016	6/30/2021
SL	Hardy	Grace	Special Education K - 12	7/1/2016	6/30/2021
SL	Hedstrom	Charles	English 6 - 12 Health K - 12	7/1/2016	6/30/2021
SL	Ho	Doreen	Mathematics 6 - 12	7/1/2016	6/30/2021
SL	Ibarra	Christopher	CTE-Industrial and Engineering Technology 6 - 12	7/1/2016	6/30/2021
SL	Ingram	Kasey	Elementary Education K - 6 Special Education K - 6	7/1/2016	6/30/2021
SL	Irwin	Deanna	Reading K - 12 Special Education K - 12 Teaching English to Speakers of Other Languages K - 12	8/1/2016	6/30/2022
SL	Jacob	Joanna	SPED - Mild/Moderate 6 - 12	8/1/2016	6/30/2022
SL	Jandoc	Sean	Hawaiian Language 6 - 12	7/1/2016	6/30/2021
SL	Kellogg	Thomas	History 6 - 12 Social Studies 6 - 12	7/1/2016	6/30/2021
SL	Kinsey	Dallas	Early Childhood Education PK - 3	7/1/2016	6/30/2021
SL	Lamb	Pamela	CTE-Business 6 - 12 Drama/Theatre Arts 6 - 12 English 6 - 8 Social Studies 6 - 8	8/1/2016	6/30/2022
SL	Lansburg	William	Chemistry 6 - 12 English 6 - 12 Latin 6 - 12 Science 6 - 12	8/1/2016	6/30/2022
SL	Ledesma	Constance	Science 6 - 8	7/1/2016	6/30/2021
SL	Lim	Chamroeun	Social Studies 6 - 12 Special Education 6 - 12	7/1/2016	6/30/2021
SL	Lockett	Sarah	SPED - Deaf/Hard of Hearing K - 12	8/1/2016	6/30/2022
SL	Lujan	Erica	Early Childhood Education PK - 3	8/1/2016	6/30/2022
SL	McAfee	Robin	Special Education P -	7/1/2016	6/30/2021

			12		
SL	Molden	Kellie	Elementary Education K - 6 Reading Specialist K - 12 Special Education K - 12 Teaching English to Speakers of Other Languages K - 12	8/1/2016	6/30/2022
SL	Olschafskie	Michael	Social Studies 6 - 12	8/1/2016	6/30/2022
SL	Onwiler	Patriece	Elementary Education K - 6 Mathematics 6 - 8	8/1/2016	6/30/2022
SL	Pearson	Sarah	Physical Education K - 12	7/1/2016	6/30/2021
SL	Pechfelder	Tami	Elementary Education K - 6	8/1/2016	6/30/2022
SL	Peterson	Carrie	Elementary Education K - 6	8/1/2016	6/30/2022
SL	Peyton	Lenora	Elementary Education K - 6 Special Education P - 12	7/1/2016	6/30/2021
SL	Rockney	John	Social Studies 6 - 12	7/1/2016	6/30/2021
SL	Schettewi	Molly	Elementary Education K - 6	7/1/2016	6/30/2021
SL	Shelton	Christina	Elementary Education K - 6	8/1/2016	6/30/2022
SL	Skinner	Kara	Social Studies 6 - 12	8/1/2016	6/30/2022
SL	Smith	James	CTE-Industrial and Engineering Technology 6 - 12	8/1/2016	6/30/2022
SL	Sparks	Patricia	Special Education K - 12	7/1/2016	6/30/2021
SL	Stephens	Nenette	English 6 - 12	7/1/2016	6/30/2021
SL	Tapper	Kristina	Early Childhood Education PK - 3 Elementary Education K - 6	7/1/2016	6/30/2021
SL	Taylor-Young	Hillery	English 6 - 12 Special Education K - 12	8/1/2016	6/30/2022
SL	Tullbane	Lisa	Elementary Education K - 6 Special Education P - 12	7/1/2016	6/30/2021
SL	Vasquez	Marianne	Elementary Education K - 6 Science 6 - 8	8/1/2016	6/30/2022

			English 6 - 8 Mathematics 6 - 8 Science 6 - 8 Social Studies 6 - 8 Special Education K - 12 Teaching English to Speakers of Other Languages 6 - 8		
SL	Webb	Joyce		8/1/2016	6/30/2022
SL	Wong	Asialyn	SPED - Mild/Moderate 6 - 12	7/1/2016	6/30/2021
			Emergency Hire		
Type	Last Name	First Name	Teaching Fields	Effective Date	Expiration Date
EH	Abdul-Hakeem	Cedric	Emergency Hire	8/1/2016	6/30/2017
EH	Ahrens	Isabella	Emergency Hire	7/1/2016	6/30/2017
EH	Ahue	Gina Marie	Emergency Hire	8/1/2016	6/30/2017
EH	Alcaraz	Bertha	Emergency Hire	8/1/2016	6/30/2017
EH	Anselmo	Kaitlin	Emergency Hire	8/1/2016	6/30/2017
EH	Anton	Jacqueline	Emergency Hire	8/1/2016	6/30/2017
EH	Arata	Nicole	Emergency Hire	8/1/2016	6/30/2017
EH	Asato	Ryan	Emergency Hire	8/1/2016	6/30/2017
EH	Au-Keliikoa	Cretian	Emergency Hire	8/1/2016	6/30/2017
EH	Balisacan	Felix	Emergency Hire	8/1/2016	6/30/2017
EH	Bell	Rosa	Emergency Hire	8/1/2016	6/30/2017
EH	Bizek	Stacey	Emergency Hire	7/1/2016	6/30/2017
EH	Bond	Michelle	Emergency Hire	8/1/2016	6/30/2017
EH	Borg	Emma	Emergency Hire	7/1/2016	6/30/2017
EH	Braum	Evelyn	Emergency Hire	8/1/2016	6/30/2017
EH	Buysse	Danielle	Emergency Hire	8/1/2016	6/30/2017
EH	Carissa	Carlson	Emergency Hire	7/1/2016	6/30/2017
EH	Casillas	Dante	Emergency Hire	8/1/2016	6/30/2017
EH	Chock	Jodie	Emergency Hire	8/1/2016	6/30/2017
EH	Collias	Monica	Emergency Hire	8/1/2016	6/30/2017
EH	Cosare	Maria Victoria	Emergency Hire	7/1/2016	6/30/2017
EH	Cunningham	Christina	Emergency Hire	8/1/2016	6/30/2017
EH	Dell	Laura	Emergency Hire	7/1/2016	6/30/2017
EH	DiDonna	Daniel	Emergency Hire	8/1/2016	6/30/2017
EH	Diego	Tracie	Emergency Hire	8/1/2016	2/28/2017
EH	Dixon	Brooke	Emergency Hire	7/1/2016	6/30/2017
EH	Elvenia	Tifeni	Emergency Hire	8/1/2016	6/30/2017
EH	Fliris	Brendan	Emergency Hire	7/1/2016	6/30/2017
EH	Franklin	Mackenzie	Emergency Hire	8/1/2016	6/30/2017
EH	Frisinger	Stephanie	Emergency Hire	7/1/2016	6/30/2017
EH	Fruge	Armand	Emergency Hire	8/1/2016	6/30/2017
EH	Funaki	Sione Manupuna	Emergency Hire	8/1/2016	6/30/2017

EH	Furlett	Joseph	Emergency Hire	7/1/2016	6/30/2017
EH	Gardner	Carli	Emergency Hire	8/1/2016	6/30/2017
EH	Gathman	Elissa	Emergency Hire	7/1/2016	6/30/2017
EH	Giang	Andrew	Emergency Hire	8/1/2016	6/30/2017
EH	Gold	Megan	Emergency Hire	8/1/2016	6/30/2017
EH	Goldberg	Jennifer	Emergency Hire	8/1/2016	6/30/2017
EH	Goo	Cheryl	Emergency Hire	8/1/2016	6/30/2017
EH	Grosso	Amanda	Emergency Hire	7/1/2016	6/30/2017
EH	Grumbling	Kristin	Emergency Hire	8/1/2016	6/30/2017
EH	Grunenwald	Cori	Emergency Hire	8/1/2016	6/30/2017
EH	Guilambo	Charmaine Joy	Emergency Hire	7/1/2016	6/30/2017
EH	Harris	Brittney	Emergency Hire	8/1/2016	6/30/2017
EH	Hendryx	Carrie	Emergency Hire	8/1/2016	6/30/2017
EH	Heuermann	Dominique	Emergency Hire	7/1/2016	6/30/2017
EH	Hilty	Melissa	Emergency Hire	8/1/2016	6/30/2017
EH	Honda	Jason	Emergency Hire	7/1/2016	6/30/2017
EH	Hood	Kyler	Emergency Hire	7/1/2016	6/30/2017
EH	Hopkins	Courtnei	Emergency Hire	8/1/2016	6/30/2017
EH	Ivey	Crystal	Emergency Hire	8/1/2016	6/30/2017
EH	Jackson	Ebony	Emergency Hire	8/1/2016	6/30/2017
EH	Jacob	Scott	Emergency Hire	7/1/2016	6/30/2017
EH	Johns	Crista	Emergency Hire	8/1/2016	6/30/2017
EH	Johnson	Clifton	Emergency Hire	8/1/2016	6/30/2017
EH	Jones	Deanna	Emergency Hire	7/1/2016	6/30/2017
EH	Jones	Mary	Emergency Hire	7/1/2016	6/30/2017
EH	Kahanu	Jonah	Emergency Hire	8/1/2016	6/30/2017
EH	Kalala	Claire	Emergency Hire	8/1/2016	6/30/2017
EH	Kan Hai	Angela	Emergency Hire	8/1/2016	6/30/2017
EH	Kaya	Kimberly	Emergency Hire	8/1/2016	6/30/2017
EH	Kise	Brooke	Emergency Hire	8/1/2016	6/30/2017
EH	Knowlton	Alexander	Emergency Hire	7/1/2016	6/30/2017
EH	Kristina	Viloria	Emergency Hire	7/1/2016	6/30/2017
EH	Kumia	Summer	Emergency Hire	8/1/2016	6/30/2017
EH	Lauda	Gabrielle	Emergency Hire	8/1/2016	6/30/2017
EH	LeBuhn	Robert	Emergency Hire	8/1/2016	6/30/2017
EH	Lee	John	Emergency Hire	7/1/2016	6/30/2017
EH	Lee	Ja Yun	Emergency Hire	8/1/2016	6/30/2017
EH	Lindfors	Samantha	Emergency Hire	7/1/2016	6/30/2017
EH	Lowry	Teryl	Emergency Hire	7/1/2016	6/30/2017
EH	Lunsford	Mengying	Emergency Hire	8/1/2016	6/30/2017
EH	Manley	Charisse	Emergency Hire	8/1/2016	6/30/2017
EH	Manzanillo	Dwayne Karlo	Emergency Hire	8/1/2016	6/30/2017
EH	Marchand	Michael	Emergency Hire	8/1/2016	6/30/2017
EH	Marriott	Garth	Emergency Hire	8/1/2016	6/30/2017

EH	Matsunami	Nicole	Emergency Hire	8/1/2016	6/30/2017
EH	McCullough	Trenton	Emergency Hire	7/1/2016	6/30/2017
EH	McDonald	Kecia	Emergency Hire	7/1/2016	6/30/2017
EH	McKnight	Jordyn	Emergency Hire	8/1/2016	6/30/2017
EH	McNew	Dala	Emergency Hire	7/1/2016	6/30/2017
EH	McWayne	Johnathan	Emergency Hire	8/1/2016	6/30/2017
EH	Mewha	Harley	Emergency Hire	8/1/2016	6/30/2017
EH	Miller	Nicholas	Emergency Hire	8/1/2016	6/30/2017
EH	Miyashiro	Levi	Emergency Hire	8/1/2016	6/30/2017
EH	Morimoto	Erica	Emergency Hire	8/1/2016	6/30/2017
EH	Nakamura	Norine	Emergency Hire	8/1/2016	6/30/2017
EH	Nishitomi	Kori	Emergency Hire	8/1/2016	6/30/2017
EH	OBrien	Renee	Emergency Hire	8/1/2016	6/30/2017
EH	Orlov	Vitaliy	Emergency Hire	8/1/2016	6/30/2017
EH	Otsuka	Cuylar	Emergency Hire	7/1/2016	6/30/2017
EH	Pacheco	Richard	Emergency Hire	8/1/2016	6/30/2017
EH	Pacol	Brittney Cassandra	Emergency Hire	7/1/2016	6/30/2017
EH	Palisbo	Peter	Emergency Hire	8/1/2016	6/30/2017
EH	Park	Earl	Emergency Hire	7/1/2016	6/30/2017
EH	Pooler	Blair	Emergency Hire	7/1/2016	6/30/2017
EH	Reeves	Tatiana	Emergency Hire	7/1/2016	6/30/2017
EH	Remigio	Ashleigh	Emergency Hire	8/1/2016	6/30/2017
EH	Roberts	Frank	Emergency Hire	8/1/2016	6/30/2017
EH	Robinett	Matt	Emergency Hire	8/1/2016	6/30/2017
EH	Robinson	Jessica	Emergency Hire	7/1/2016	6/30/2017
EH	Romero	Juan	Emergency Hire	8/1/2016	6/30/2017
EH	Safko	Nicholas	Emergency Hire	8/1/2016	6/30/2017
EH	Saito	Nicole	Emergency Hire	8/1/2016	6/30/2017
EH	Sallee	Nicole	Emergency Hire	8/1/2016	6/30/2017
EH	Saunders	Timothy	Emergency Hire	8/1/2016	6/30/2017
EH	Sayer	Patrick	Emergency Hire	8/1/2016	6/30/2017
EH	Schneider	Megan	Emergency Hire	8/1/2016	6/30/2017
EH	Shokar	Meagan	Emergency Hire	8/1/2016	6/30/2017
EH	Sivilli	Maddlyn	Emergency Hire	8/1/2016	6/30/2017
EH	Sports	George	Emergency Hire	8/1/2016	6/30/2017
EH	Sugimoto	Dallas	Emergency Hire	8/1/2016	6/30/2017
EH	Tacderas	Anita	Emergency Hire	8/1/2016	6/30/2017
EH	Tagaban	Lauren Gaile	Emergency Hire	7/1/2016	6/30/2017
EH	Taira	Carolyn	Emergency Hire	8/1/2016	6/30/2017
EH	Tanner	Lauren	Emergency Hire	8/1/2016	6/30/2017
EH	Tatum	Pomeroy	Emergency Hire	8/1/2016	6/30/2017
EH	Tavares	Daniel	Emergency Hire	8/1/2016	6/30/2017
EH	Tibbetts	Mari	Emergency Hire	8/1/2016	6/30/2017
EH	Todd	Emily	Emergency Hire	7/1/2016	6/30/2017

EH	Tran	Maile	Emergency Hire	8/1/2016	6/30/2017
EH	Truong	Lan	Emergency Hire	7/1/2016	6/30/2017
EH	Ubiedi	Charmaine	Emergency Hire	8/1/2016	6/30/2017
EH	Uila	Jholena	Emergency Hire	7/1/2016	6/30/2017
EH	Wadlegger	Kelly	Emergency Hire	8/1/2016	6/30/2017
EH	Wadsworth	Clare	Emergency Hire	8/1/2016	6/30/2017
EH	Walker	Kimber	Emergency Hire	8/1/2016	6/30/2017
EH	Walling	Joshua	Emergency Hire	8/1/2016	6/30/2017
EH	Wallis	Katherine	Emergency Hire	7/1/2016	6/30/2017
EH	Warrior	Bailey	Emergency Hire	7/1/2016	6/30/2017
EH	Watanabe	Trisha	Emergency Hire	8/1/2016	6/30/2017
EH	Whittaker	Jennifer	Emergency Hire	8/1/2016	6/30/2017
EH	Wiseman	Lani	Emergency Hire	8/1/2016	6/30/2017
EH	Wong	Von Scott	Emergency Hire	8/1/2016	6/30/2017
EH	Worthington	Cassandra	Emergency Hire	8/1/2016	6/30/2017
EH	Yamada	Emi	Emergency Hire	8/1/2016	6/30/2017
EH	Yonamine	Dane	Emergency Hire	8/1/2016	6/30/2017
			Special Permit		
Type	Last Name	First Name	Teaching Fields	Effective Date	Expiration Date
SP	Sarsona	Isaac	CTE Special Permit	7/1/2016	6/30/2017
SP	Souza	Brianna	CTE Special Permit	7/1/2016	6/30/2017
			Added Fields		
Type	Last Name	First Name	Teaching Fields	Effective Date	Expiration Date
AAF	Barsatan	Margarette	Teacher Leader	7/1/2016	6/30/2017
AAF	Campbell	Morgan	Special Education 6 - 12	8/1/2016	6/30/2020
AAF	Castro	Lauryn Jey	Teacher Leader	7/1/2016	6/30/2017
AAF	Ching	William	CTE-Industrial and Engineering Technology 6 - 12	7/1/2016	6/30/2017
AAF	Dadzie	Suzanne	Elementary Education K - 6	8/1/2016	6/30/2019
AAF	Dressler	Michelle	Art 6 - 12 Social Studies 6 - 12	8/1/2016	6/30/2027
AAF	Dunn	Keoni	Teacher Leader	7/1/2016	6/30/2017
AAF	Durham	Susan	Elementary Education K - 6	7/1/2016	6/30/2019
AAF	Durham	Susan	Special Education P - 12	8/1/2016	6/30/2019
AAF	Fairchild	Wrayna	School Librarian K - 6	7/1/2016	6/30/2019
AAF	Fassett	Lindsay	Health 6 - 12	8/15/2016	6/30/2017
AAF	Fernandes	Amber	English 6 - 12	8/1/2016	6/30/2021
AAF	Fountain	Wendy	Elementary Education K - 6	8/1/2016	6/30/2017

AAF	Gordon	Haley	School Counselor K - 12	7/1/2016	6/30/2021
AAF	Hawkins	Matthew	English 6 - 12	8/1/2016	6/30/2020
AAF	Holman	Evelynn	Teacher Leader	7/1/2016	6/30/2017
AAF	Honda	Bryan	Teacher Leader	7/1/2016	6/30/2017
AAF	Idemoto	Chieko	Special Education PK - 3	7/1/2016	6/30/2017
AAF	Ingerson	Zoe	English 6 - 8	8/1/2016	6/30/2019
AAF	Kalilikane-Lau	Kristen	Special Education 6 - 12	7/1/2016	6/30/2018
AAF	Kam	Donna	English 6 - 12	7/1/2016	6/30/2019
AAF	Kim	Gina	Korean 6 - 12	8/1/2016	6/30/2017
AAF	Malloy	Jennifer	Special Education K - 12	7/1/2016	6/30/2020
AAF	Malloy	Jennifer	Teaching English to Speakers of Other Languages K - 12	7/1/2016	6/30/2020
AAF	Matsushita	Darlene	Mathematics 6 - 12	7/1/2016	6/30/2017
AAF	Miller	Linda	Elementary Education K - 6 Social Studies 6 - 8 Teaching English to Speakers of Other Languages K - 6 Teaching English to Speakers of Other Languages 6 - 8 English 6 - 8	8/1/2016	6/30/2021
AAF	Miyamoto	Karen Ann	Music K - 12	7/1/2016	6/30/2018
AAF	Moon	Deborah	SPED - Mild/Moderate K - 6	8/1/2016	6/30/2019
AAF	Moraes	Deena	Elementary Education K - 6	7/1/2016	6/30/2021
AAF	Pascua	Charles	Special Education K - 6	8/1/2016	6/30/2019
AAF	Pukahi	Ruth	School Librarian K - 6	7/1/2016	6/30/2018
AAF	Robinson	Cawley	Reading K - 12	7/1/2016	6/30/2021
AAF	Shiroma	Randall	Art 6 - 12	7/11/2016	6/30/2019
AAF	Smorol	Sarah	Special Education 6 - 12	7/1/2016	6/30/2020
AAF	Spraggins	Blake	Mathematics 6 - 12	7/1/2016	6/30/2019
AAF	Stephens	Nenette	Early Childhood Education PK - 3	8/1/2016	6/30/2021
AAF	Stewart	Roxane	Teacher Leader	8/8/2016	6/30/2017
AAF	Toilolo	Vaega	Teacher Leader	7/1/2016	6/30/2020
AAF	Vicker	Margaret	Special Education 6 - 12	7/1/2016	6/30/2020
AAF	Wilson	Christen	Special Education K - 6	8/1/2016	6/30/2019
AAF	Woo	Chrisna	Special Education 6 - 8	8/1/2016	6/30/2018

AAF	Yerlick	Avidan	Special Education 6 - 12	8/1/2016	6/30/2020
-----	---------	--------	--------------------------	----------	-----------

Renewed Licenses

Type	Last Name	First Name	Standard Licenses Teaching Fields	Effective Date	Expiration Date
SL	Abe	April	Special Education K - 12	7/1/2016	6/30/2021
SL	Abellera	Polly Ann	Elementary Education K - 6	7/1/2016	6/30/2021
SL	Aceret	Heidi	School Counselor K - 12, Social Studies 6 - 12	7/1/2016	6/30/2021
SL	Acierto	Cynthia	Elementary Education K - 6	7/1/2016	6/30/2021
SL	Agard	Joy	Elementary Education K - 6	7/1/2016	6/30/2021
SL	Agpalsa	Jody	English 6 - 12, SPED - Mild/Moderate K - 12	7/1/2016	6/30/2021
SL	Aiona	Donovan	Elementary Education K - 6	7/1/2016	6/30/2021
SL	Akemann	Sarah	English 6 - 12	7/1/2016	6/30/2021
SL	Aken	Genevieve	CTE-Natural Resources 6 - 12	7/1/2016	6/30/2021
SL	Alip-Taniguchi	Stephanie	Elementary Education K - 6	7/1/2016	6/30/2021
SL	Alu	Paula	Elementary Education K - 6	7/1/2016	6/30/2021
SL	Ancheta	Danny	Mathematics 6 - 12	7/1/2016	6/30/2021
SL	Anderson	Janet	Elementary Education K - 6	7/1/2016	6/30/2021
SL	Apana	Corinne	SPED - Mild/Moderate K - 12	7/1/2016	6/30/2021
SL	Arrabito	Christa	Science 6 - 12	7/1/2016	6/30/2021
SL	Arveson	Mari Ann	SPED - Mild/Moderate K - 12	7/1/2016	6/30/2021
SL	Asing	Warner	SPED -	7/1/2016	6/30/2021

			Mild/Moderate K - 12		
SL	Auyong	Stephanie	Elementary Education K - 6	7/1/2016	6/30/2021
SL	AuYoung	Carrie Ann	Elementary Education K - 6	7/1/2016	6/30/2021
SL	Aweau	Eva	Elementary Education K - 6	7/1/2016	6/30/2021
SL	Baluscang	Jemimah Joy	Elementary Education K - 6	7/1/2016	6/30/2021
SL	Barenaba	Debra	Art K - 12	7/1/2016	6/30/2021
SL	Barrett	Sean	Mathematics 6 - 12	7/1/2016	6/30/2021
SL	Bataluna	Michael	Music K - 12	7/1/2016	6/30/2021
SL	Bayez	Julio	CTE-Industrial and Engineering Technology 6 - 12	7/1/2016	6/30/2021
SL	Belding	Monica	French 6 - 12	7/1/2016	6/30/2021
SL	Betham	Cindy Lee	Elementary Education K - 6	7/1/2016	6/30/2021
SL	Birdsall	Brian	SPED - Mild/Moderate K - 12	7/1/2016	6/30/2021
SL	Blair	Natasha	Social Studies 6 - 12, Spanish 6 - 12	7/1/2016	6/30/2021
SL	Bland	Valerie	Elementary Education K - 6	7/1/2016	6/30/2021
SL	Bloomfield	Jessica	English 6 - 12	7/1/2016	6/30/2021
SL	Bouknight	Jennifer	Special Education K - 12	7/1/2016	6/30/2021
SL	Bradley	George	Elementary Education K - 6, Mathematics 6 - 8, Science 6 - 8	7/1/2016	6/30/2021
SL	Brown	Janet	Elementary Education K - 6	7/1/2016	6/30/2021
SL	Brown-Dunham	Ruth	Elementary Education K - 6	7/1/2016	6/30/2021
SL	Brummel	Kristen	Elementary Education K - 6	7/1/2016	6/30/2021
SL	Bryan	Christina	Early Childhood Education PK - 3, Elementary Education K - 6, Special Education K - 12, Special	7/1/2016	6/30/2021

			Education PK - 3		
SL	Bucasas	Shannon	Social Studies 6 - 12	7/1/2016	6/30/2021
SL	Bush	Charvis	Physical Education K - 12	7/1/2016	6/30/2021
SL	Byrne	Brian	SPED - Mild/Moderate K - 12	7/1/2016	6/30/2021
SL	Cacatian	Joseph	Social Studies 6 - 12	7/1/2016	6/30/2021
SL	Caliedo	Karen Kay	Elementary Education K - 6	7/1/2016	6/30/2021
SL	Camacho	Kinau	Mathematics 6 - 12	7/1/2016	6/30/2021
SL	Campbell	Samuel	Science 6 - 12	7/1/2016	6/30/2021
SL	Carpenter	Catherine	Elementary Education K - 6	7/1/2016	6/30/2021
SL	Carroll	Georgia	Science 6 - 12	7/1/2016	6/30/2021
SL	Carvalho	Tamarine	Elementary Education K - 6, SPED - Severe/Profound 6 - 12	7/1/2016	6/30/2021
SL	Casamina	Paula	English 6 - 12	7/1/2016	6/30/2021
SL	Case	Bonnie	Hawaiian Language 6 - 12, Social Studies 6 - 12	7/1/2016	6/30/2021
SL	Casebier	Dawna	Elementary Education K - 6	7/1/2016	6/30/2021
SL	Cashman-Valdez	Colleen	School Counselor K - 12	7/1/2016	6/30/2021
SL	Castor	Tammy	Elementary Education K - 6	7/1/2016	6/30/2021
SL	Cavanaugh	Kathleen	School Counselor K - 12	7/1/2016	6/30/2021
SL	Chang	Audra	Physical Education K - 12, School Counselor K - 12	7/1/2016	6/30/2021
SL	Chapman	Heather	School Counselor K - 12	7/1/2016	6/30/2021
SL	Char	Barbara	Elementary Education K - 6	7/1/2016	6/30/2021
SL	Cheung	Freeman	Mathematics 6 - 12	7/1/2016	6/30/2021

SL	Chi	Howard	English 6 - 12	7/1/2016	6/30/2021
SL	Chinen	Stephen	School Counselor K - 12	7/1/2016	6/30/2021
SL	Chinen	Ernest	Elementary Education K - 6, School Librarian K - 12	7/1/2016	6/30/2021
SL	Chock	Dana	CTE-Industrial and Engineering Technology 6 - 12	7/1/2016	6/30/2021
SL	Chock	Kathy	Elementary Education K - 6	7/1/2016	6/30/2021
SL	Chun	Tiffany Ann	Elementary Education K - 6	7/1/2016	6/30/2021
SL	Chun	Cecily	Elementary Education K - 6, SPED - Mild/Moderate K - 12	7/1/2016	6/30/2021
SL	Chun	Pamela	Elementary Education K - 6	7/1/2016	6/30/2021
SL	Colmenares	Amy	English 6 - 12	7/1/2016	6/30/2021
SL	Correa	Andrew	Social Studies 6 - 12	7/1/2016	6/30/2021
SL	Croft	David	CTE-Industrial and Engineering Technology 6 - 12	7/1/2016	6/30/2021
SL	Curran	Chameka	Health 6 - 12, SPED - Mild/Moderate K - 12	7/1/2016	6/30/2021
SL	Dar	Gerald	English 6 - 12	7/1/2016	6/30/2021
SL	Darnell	Skye	Mathematics 6 - 12	7/1/2016	6/30/2021
SL	Dayton	Linda	Hawaiian Language 6 - 12, SPED - Mild/Moderate K - 12	7/1/2016	6/30/2021
SL	De Guzman-Osakoda	Lennie	Elementary Education K - 6	7/1/2016	6/30/2021
SL	Dean	Eunice	Elementary Education K - 6	7/1/2016	6/30/2021
SL	Dembinski	Lawrence	Social Studies 6 - 12	7/1/2016	6/30/2021
SL	Devito	Lindsey	Elementary Education K - 6	7/1/2016	6/30/2021

SL	Dimisillo	Linda	Health K - 12, Physical Education K - 12	7/1/2016	6/30/2021
SL	Diorec	Colleen	Elementary Education K - 6	7/1/2016	6/30/2021
SL	Distelhorst-Coonradt	Cassandra	Elementary Education K - 6	7/1/2016	6/30/2021
SL	Donnelly	Christi-Jean	Elementary Education K - 6, Teaching English to Speakers of Other Languages K - 6	7/1/2016	6/30/2021
SL	Douglass	Danielle	Elementary Education K - 6	7/1/2016	6/30/2021
SL	Dubiel	Rexann	Elementary Education K - 6	7/1/2016	6/30/2021
SL	Dung	Cheryl	SPED - Mild/Moderate K - 12, Social Studies 6 - 12	7/1/2016	6/30/2021
SL	Dung	Cheryl	Elementary Education K - 6	7/1/2016	6/30/2021
SL	Dungan	Laurie	Social Studies 6 - 12	7/1/2016	6/30/2021
SL	Ebesu-Ortiz	Jodi	Elementary Education K - 6	7/1/2016	6/30/2021
SL	Ebisutani	Geni	Elementary Education K - 6	7/1/2016	6/30/2021
SL	Elizares	Renee	Elementary Education K - 6	7/1/2016	6/30/2021
SL	Elizares	Matthew	Elementary Education K - 6	7/1/2016	6/30/2021
SL	Enos	Dygre	Mathematics 6 - 12	7/1/2016	6/30/2021
SL	Enriquez	Gayle	Elementary Education K - 6	7/1/2016	6/30/2021
SL	Erice	Randall	SPED - Mild/Moderate K - 12	7/1/2016	6/30/2021
SL	Eubank	Christopher	Social Studies 6 - 12	7/1/2016	6/30/2021
SL	Evers	Kyla	Physical Education 6 - 12	7/1/2016	6/30/2021
SL	Fa'anunu	Lei	Elementary Education K - 6	7/1/2016	6/30/2021
SL	Fagan	Lei	Elementary Education K - 6, Special Education K - 12	7/1/2016	6/30/2021

SL	Fernandez	Jessica	Elementary Education K - 6	7/1/2016	6/30/2021
SL	Fernandez	Minette	CTE-Public and Human Services 6 - 12	7/1/2016	6/30/2021
SL	Ferreira	Jodi	CTE-Natural Resources 6 - 12, SPED - Mild/Moderate K - 12	7/1/2016	6/30/2021
SL	Firestone	Tarynn	Elementary Education K - 6	7/1/2016	6/30/2021
SL	Fitchett	Arthur	CTE-Industrial and Engineering Technology 6 - 12	7/1/2016	6/30/2021
SL	Florendo	Randolph	SPED - Mild/Moderate K - 12	7/1/2016	6/30/2021
SL	Fong	Stephen	Elementary Education K - 6	7/1/2016	6/30/2021
SL	Fonoti	Fiona	Mathematics 6 - 8	7/1/2016	6/30/2021
SL	Franco	Richard	Social Studies 6 - 12	7/1/2016	6/30/2021
SL	Freitas	Troy	Mathematics 6 - 12	7/1/2016	6/30/2021
SL	Frerking	Sylvia	Elementary Education K - 6, School Counselor K - 12	7/1/2016	6/30/2021
SL	Fu	Henry	Music K - 12	7/1/2016	6/30/2021
SL	Fujii	Troy	Mathematics 6 - 8, SPED - Mild/Moderate K - 12	7/1/2016	6/30/2021
SL	Fujii	Grace	Elementary Education K - 6	7/1/2016	6/30/2021
SL	Fujimoto	Edwin	Elementary Education K - 6	7/1/2016	6/30/2021
SL	Fujimoto	Debra	Special Education K - 12	7/1/2016	6/30/2021
SL	Fukumoto	Duane	SPED - Mild/Moderate K - 12, Teaching English to Speakers of Other Languages K - 12	7/1/2016	6/30/2021
SL	Fukumoto	Laura	Elementary	7/1/2016	6/30/2021

			Education K - 6		
SL	Fuller	Craig	Science 6 - 12	7/1/2016	6/30/2021
SL	Fuller	Terrence	Science 6 - 12	7/1/2016	6/30/2021
SL	Funai	Patrick	Mathematics 6 - 12	10/1/2015	6/30/2021
SL	Funasaki	Sheri Ann	SPED - Severe/Profound K - 12, Special Education PK - 3	7/1/2016	6/30/2021
SL	Fung	Ricky	School Counselor K - 12	7/1/2016	6/30/2021
SL	Furukawa	Leslie	Early Childhood Education PK - 3, Special Education K - 12	7/1/2016	6/30/2021
SL	Galdeira	Chelsie Ann	English 6 - 12	7/1/2016	6/30/2021
SL	Garcia	Nina	Elementary Education K - 6	7/1/2016	6/30/2021
SL	Gatanis	Gina	SPED - Mild/Moderate K - 12	7/1/2016	6/30/2021
SL	Giorlando	Patricia	Elementary Education K - 6, Special Education K - 12, Special Education PK - 3	7/1/2016	6/30/2021
SL	Goo	Rieko	English 6 - 12, School Librarian K - 12	7/1/2016	6/30/2021
SL	Gooch	Maud	Science 6 - 12	7/1/2016	6/30/2021
SL	Goto	John	Social Studies 6 - 12	7/1/2016	6/30/2021
SL	Graham	Thomas	Elementary Education K - 6, SPED - Deaf/Hard of Hearing K - 12	7/1/2016	6/30/2021
SL	Gray	Joanne	Elementary Education K - 6	7/1/2016	6/30/2021
SL	Griffith	Lori	Elementary Education K - 6	7/1/2016	6/30/2021
SL	Ha	Tae Young	Mathematics 6 - 12	7/1/2016	6/30/2021
SL	Haia	Danelle	Elementary Education K - 6	7/1/2016	6/30/2021
SL	Hale	Adrienne	Elementary Education K - 6	7/1/2016	6/30/2021

SL	Halsted	Samuel	CTE-Industrial and Engineering Technology 6 - 12, Science 6 - 12	7/1/2016	6/30/2021
SL	Hamada	Matthew	Physical Education K - 12	7/1/2016	6/30/2021
SL	Hamura	Blake	Elementary Education K - 6, SPED - Mild/Moderate K - 12	7/1/2016	6/30/2021
SL	Hanoa	Sheri	English 6 - 12	7/1/2016	6/30/2021
SL	Hao	Alma	Elementary Education K - 6	7/1/2016	6/30/2021
SL	Hara	Sheryl	Elementary Education K - 6	7/1/2016	6/30/2021
SL	Haraguchi	Tina	School Counselor K - 12, Social Studies 6 - 12	7/1/2016	6/30/2021
SL	Harauchi	David	Elementary Education K - 6	7/1/2016	6/30/2021
SL	Harrs	Gregory	Social Studies 6 - 12	7/1/2016	6/30/2021
SL	Hartl-Davis	Jennifer	English 6 - 12, Special Education K - 12	7/1/2016	6/30/2021
SL	Hartman	Jeffrey	SPED - Severe/Profound K - 12	7/1/2016	6/30/2021
SL	Hasegawa	David	Russian 6 - 12, Social Studies 6 - 12	7/1/2016	6/30/2021
SL	Hashizume	Lynn	CTE-Public and Human Services 6 - 12	7/1/2016	6/30/2021
SL	Hatami	Michelle	Science 6 - 12	7/1/2016	6/30/2021
SL	Hathaway	Tara	Elementary Education K - 6	2/1/2016	6/30/2021
SL	Hayashi	Leanne	Elementary Education K - 6, School Librarian K - 12	7/1/2016	6/30/2021
SL	Hayselden	Anthony	Music K - 12	7/1/2016	6/30/2021
SL	Henderson-De Ramos	Brandy	Social Studies 6 - 12	7/1/2016	6/30/2021
SL	Henriques	Devlyn	Science 6 - 12	7/1/2016	6/30/2021

SL	Hidano	Paul	CTE-Industrial and Engineering Technology 6 - 12	7/1/2016	6/30/2021
SL	Higa	Lyndsey	Art K - 12, School Counselor K - 12	7/1/2016	6/30/2021
SL	Higashida	Susette	CTE-Public and Human Services 6 - 12	7/1/2016	6/30/2021
SL	Hill	Deborah	Elementary Education K - 6, Special Education K - 12	7/1/2016	6/30/2021
SL	Hirai	Clinton	Elementary Education K - 6	7/1/2016	6/30/2021
SL	Hirano	Alana	Elementary Education K - 6	7/1/2016	6/30/2021
SL	Hirohata	Kel	CTE-Public and Human Services 6 - 12	7/1/2016	6/30/2021
SL	Hirota	Evelyn	Elementary Education K - 6	7/1/2016	6/30/2021
SL	Hirotsu	Bruce	CTE-Business 6 - 12, School Counselor 6 - 12	7/1/2016	6/30/2021
SL	Hisashima	Debbie	Elementary Education K - 6	7/1/2016	6/30/2021
SL	Ho	Darren	English 6 - 12	6/1/2015	6/30/2020
SL	Ho	Janice	Elementary Education K - 6, SPED - Mild/Moderate K - 12, Special Education K - 12	7/1/2016	6/30/2021
SL	Hodges	Patricia	Elementary Education K - 6	7/1/2016	6/30/2021
SL	Holland	Peter	Art K - 12	7/1/2016	6/30/2021
SL	Holtzmann	Joseph	Science 6 - 12	7/1/2016	6/30/2021
SL	Hoopai	Jacob	Physical Education K - 12	7/1/2016	6/30/2021
SL	Howe	Ryan	Music K - 12	7/1/2016	6/30/2021
SL	Hu	John	Elementary Education K - 6	7/1/2016	6/30/2021
SL	Huang	Olivia	Early Childhood Education PK - 3, Elementary Education K - 6	7/1/2016	6/30/2021
SL	Ideoka	Keith	CTE-Natural	7/1/2016	6/30/2021

			Resources 6 - 12		
SL	Ikehara	Brett	Music 6 - 12	7/1/2016	6/30/2021
SL	Ikenaga	Mark	SPED - Mild/Moderate K - 12	7/1/2016	6/30/2021
SL	Inaba-Rodriguez	Ann	Elementary Education K - 6	7/1/2016	6/30/2021
SL	Infiesto	Tyrone	Elementary Education K - 6	7/1/2016	6/30/2021
SL	Ing	Laura	Teaching English to Speakers of Other Languages K - 12	7/1/2016	6/30/2021
SL	Inouye	Mark	Mathematics 6 - 12	7/1/2016	6/30/2021
SL	Inouye	Rory	Mathematics 6 - 12	7/1/2016	6/30/2021
SL	Irie	Karen	Special Education K - 12	7/1/2016	6/30/2021
SL	Ishikawa	Tammi	Elementary Education K - 6	7/1/2016	6/30/2021
SL	Ito	Michelle	Elementary Education K - 6	7/1/2016	6/30/2021
SL	Iwase	Davin	Elementary Education K - 6, SPED - Mild/Moderate K - 12	7/1/2016	6/30/2021
SL	Jacinto	Nelson	English 6 - 12	7/1/2016	6/30/2021
SL	Jacobson	Monika	Mathematics 6 - 12	7/1/2016	6/30/2021
SL	Jakahi	Lori	Elementary Education K - 6	7/1/2016	6/30/2021
SL	Jay	Rebecca	Physical Education K - 12, SPED - Mild/Moderate K - 12, School Counselor K - 6	7/1/2016	6/30/2021
SL	Jolly	Coleen	Elementary Education K - 6	7/1/2016	6/30/2021
SL	Kagawa	Tori	Early Childhood Education PK - 3, Elementary Education K - 6	7/1/2016	6/30/2021
SL	Kahawaii	Sherry	Elementary Education K - 6	2/1/2016	6/30/2021
SL	Kahoohanohano	Catherine	Physical Education K - 12	7/1/2016	6/30/2021

SL	Kaho'onei	Marlene	Elementary Education K - 6	7/1/2016	6/30/2021
SL	Kaio	Susan	Elementary Education K - 6	7/1/2016	6/30/2021
SL	Kakuda	Ryan	Science 6 - 12	7/1/2016	6/30/2021
SL	Kakugawa	Kim	School Counselor K - 12	7/1/2016	6/30/2021
SL	Kakutani	Andy	Mathematics 6 - 12	7/1/2016	6/30/2021
SL	Kalama	Ropiha	Science 6 - 12	7/1/2016	6/30/2021
SL	Kamakaiwi	Amy	Elementary Education K - 6	7/1/2016	6/30/2021
SL	Kamaura	Taryn	School Counselor K - 12	7/1/2016	6/30/2021
SL	Kaminski	Robert	CTE-Industrial and Engineering Technology 6 - 12	7/1/2016	6/30/2021
SL	Kam-Pabingwit	Rosemary	Elementary Education K - 6, Special Education K - 12	7/1/2016	6/30/2021
SL	Kanemoto	Matthew	CTE-Natural Resources 6 - 12	7/1/2016	6/30/2021
SL	Kaneshiro	Calvin	Physical Education K - 12, SPED - Mild/Moderate K - 12	7/1/2016	6/30/2021
SL	Kaneshiro	Max	Elementary Education K - 6	7/1/2016	6/30/2021
SL	Kanewa	Davelyn Sue	Early Childhood Education PK - 3, Elementary Education K - 6, SPED - Mild/Moderate K - 12	7/1/2016	6/30/2021
SL	Kanno	Dawn	Elementary Education K - 6	7/1/2016	6/30/2021
SL	Kashima-Rodero	Ashley	Elementary Education K - 6, English 6 - 8	7/1/2016	6/30/2021
SL	Kau	Claire	Elementary Education K - 6, SPED - Mild/Moderate K - 12	7/1/2016	6/30/2021
SL	Kauahikaua	Marianette	School Counselor K - 12	7/1/2016	6/30/2021

SL	Kauwelo	Fl'Nell	Elementary Education K - 6	7/1/2016	6/30/2021
SL	Kavanaugh	Claire	Science 6 - 12	7/1/2016	6/30/2021
SL	Kawamoto	Susan	English 6 - 12	7/1/2016	6/30/2021
SL	Kealoha	Beldon	Social Studies 6 - 12	7/1/2016	6/30/2021
SL	Keaulana	Marcia	Elementary Education K - 6	7/1/2016	6/30/2021
SL	Kendrick	Alexander	English 6 - 12	7/1/2016	6/30/2021
SL	Keola	Emelda	Social Studies 6 - 12	7/1/2016	6/30/2021
SL	Kepler	Christopher	English 6 - 12	7/1/2016	6/30/2021
SL	Kerr	Joell	Mathematics 6 - 12	7/1/2016	6/30/2021
SL	Kiesser	Diana	Elementary Education K - 6, SPED - Mild/Moderate K - 12	7/1/2016	6/30/2021
SL	Kikuchi	Julie	English 6 - 12	7/1/2016	6/30/2021
SL	Kikuchi	Lance	English 6 - 12	2/1/2016	6/30/2021
SL	Kim	Helen	Elementary Education K - 6, Teacher Leader	7/1/2016	6/30/2021
SL	Kimball	Camron	Physical Education K - 12	7/1/2016	6/30/2021
SL	Kim-Kaeo	Wendy Ann	SPED - Mild/Moderate K - 12	7/1/2016	6/30/2021
SL	Kimura	Geraldine	Elementary Education K - 6	7/1/2016	6/30/2021
SL	Kiri	Sherisse	Elementary Education K - 6	7/1/2016	6/30/2021
SL	Knutzen	John	Science 6 - 12	7/1/2016	6/30/2021
SL	Koga	Tristan	Elementary Education K - 6	7/1/2016	6/30/2021
SL	Kohara	Pamela	Elementary Education K - 6	7/1/2016	6/30/2021
SL	Koki	Tammy	Elementary Education K - 6	7/1/2016	6/30/2021
SL	Konishi	Tysha	Mathematics 6 - 12	7/1/2016	6/30/2021
SL	Kozuma	Elyse	Elementary Education K - 6	7/1/2016	6/30/2021
SL	Krauss	Ginger	Art K - 12, Elementary Education K - 6	7/1/2016	6/30/2021
SL	Krieg	Lia	Science 6 - 12	7/1/2016	6/30/2021

SL	Ku	Johnnie	Elementary Education K - 6, Social Studies 6 - 12	7/1/2016	6/30/2021
SL	Kuban	Tiffany	School Counselor K - 12	7/1/2016	6/30/2021
SL	Kumakura	Gail	Japanese 6 - 12	7/1/2016	6/30/2021
SL	Kumura	Aimee	Elementary Education K - 6	7/1/2016	6/30/2021
SL	Kunihisa	Sharon	Elementary Education K - 6	7/1/2016	6/30/2021
SL	Kunimura	Shari	Elementary Education K - 6	7/1/2016	6/30/2021
SL	Kuntemeyer	Carolyn	Elementary Education K - 6	7/1/2016	6/30/2021
SL	Kuwahara	Lorna	Elementary Education K - 6	7/1/2016	6/30/2021
SL	Kuwahara	Terri	Elementary Education K - 6	7/1/2016	6/30/2021
SL	Kwee	Lori Mae P.	Elementary Education K - 6	7/1/2016	6/30/2021
SL	Labuanan	Ahlayn	Elementary Education K - 6	7/1/2016	6/30/2021
SL	Laeha	William	Elementary Education K - 6	7/1/2016	6/30/2021
SL	Laforteza	Carrie	Elementary Education K - 6, SPED - Mild/Moderate K - 12	7/1/2016	6/30/2021
SL	Lam	Wilfred	Elementary Education K - 6	7/1/2016	6/30/2021
SL	Lam	Michele	Elementary Education K - 6	7/1/2016	6/30/2021
SL	Lane	Benjamin	English 6 - 12	7/1/2016	6/30/2021
SL	Lang	Melany	Elementary Education K - 6	7/1/2016	6/30/2021
SL	Larson	Karin	Elementary Education K - 6, English 6 - 8, Social Studies 6 - 8	7/1/2016	6/30/2021
SL	Lau	Jennifer	English 6 - 8, SPED - Mild/Moderate K - 12	7/1/2016	6/30/2021
SL	Lau	Leonard	SPED - Mild/Moderate K - 12	7/1/2016	6/30/2021

SL	Leiato	Joanne	Physical Education K - 12, SPED - Mild/Moderate K - 12	7/1/2016	6/30/2021
SL	Leitner	Daniel	Social Studies 6 - 12	7/1/2016	6/30/2021
SL	Lembeck	Linda	Elementary Education K - 6	7/1/2016	6/30/2021
SL	Leong	Liane	Elementary Education K - 6	2/1/2016	6/30/2021
SL	Loo	Joan	CTE-Business 6 - 12, CTE-Business Vocational 6 - 12	7/1/2016	6/30/2021
SL	Lopez	Julie	Elementary Education K - 6, SPED - Mild/Moderate K - 12	7/1/2016	6/30/2021
SL	Luczon	Esther	Physical Education K - 12	7/1/2016	6/30/2021
SL	Lum	Gerald	CTE-Industrial and Engineering Technology 6 - 12	7/1/2016	6/30/2021
SL	Lutz	Amanda	Elementary Education K - 6	7/1/2016	6/30/2021
SL	Lyons	Kitty	Elementary Education K - 6	7/1/2016	6/30/2021
SL	Maddock	Michael	Elementary Education K - 6	7/1/2016	6/30/2021
SL	Maesaka	Corey	Music K - 12	7/1/2016	6/30/2021
SL	Mahuka	Jennifer	Elementary Education K - 6, SPED - Mild/Moderate K - 12	7/1/2016	6/30/2021
SL	Manding	Glorilynn	Special Education K - 12	7/1/2016	6/30/2021
SL	Marks	Shirley	Elementary Education K - 6, Special Education K - 12	7/1/2016	6/30/2021
SL	Marmelo	Josetta	Elementary Education K - 6, Special Education K - 6	7/1/2016	6/30/2021
SL	Marquez-Carganilla	Janice	Elementary Education K - 6	7/1/2016	6/30/2021
SL	Marsh	Rebecca	Social Studies 6 -	7/1/2016	6/30/2021

			12		
SL	Masterson	Diana	Elementary Education K - 6	7/1/2016	6/30/2021
SL	Masuhara	Janel	School Counselor 6 - 12	7/1/2016	6/30/2021
SL	Mata'u	Pauline	Physical Education K - 12	7/1/2016	6/30/2021
SL	Matsumoto	Avery	CTE-Industrial and Engineering Technology 6 - 12, SPED - Mild/Moderate K - 12	7/1/2016	6/30/2021
SL	Matsumoto	Julie	Elementary Education K - 6, School Librarian K - 12	7/1/2016	6/30/2021
SL	Matsumoto	Kristie	School Counselor K - 12	7/1/2016	6/30/2021
SL	Matsushita-Nakamura	Ann	Elementary Education K - 6	7/1/2016	6/30/2021
SL	Matsuzaki	Jeff	SPED - Mild/Moderate K - 12	7/1/2016	6/30/2021
SL	McCulloch	Neil	SPED - Mild/Moderate K - 12	7/1/2016	6/30/2021
SL	McKeown	Jeffrey	Science 6 - 12	7/1/2016	6/30/2021
SL	McManus	Kerry	Elementary Education K - 6, Social Studies 6 - 8	7/1/2016	6/30/2021
SL	McMonagle	Shannon	English 6 - 12	7/1/2016	6/30/2021
SL	McNeely	Sean	Elementary Education K - 6	7/1/2016	6/30/2021
SL	Medaglia	Christine	English 6 - 12, English 6 - 8	7/1/2016	6/30/2021
SL	Miguel	Leslie	Teaching English to Speakers of Other Languages 6 - 12	7/1/2016	6/30/2021
SL	Miguel	Marc	Physical Education K - 12	7/1/2016	6/30/2021
SL	Miller	William	Social Studies 6 - 12	7/1/2016	6/30/2021
SL	Miner	Marie	Elementary Education K - 6, SPED - Mild/Moderate	7/1/2016	6/30/2021

			K - 12		
SL	Miura	Gerald	Physical Education K - 12	7/1/2016	6/30/2021
SL	Miyakawa	Cora	Elementary Education K - 6	7/1/2016	6/30/2021
SL	Miyano	Paul	Music K - 12	7/1/2016	6/30/2021
SL	Miyashiro	Marvin	CTE-Industrial and Engineering Technology 6 - 12	7/1/2016	6/30/2021
SL	Moises	Kristi	School Counselor K - 12	7/1/2016	6/30/2021
SL	Monserat	Kimberley	Elementary Education K - 6	7/1/2016	6/30/2021
SL	Montgomery	Tanya	Physical Education K - 12, School Counselor K - 12	7/1/2016	6/30/2021
SL	Moraes	Deena	Elementary Education K - 6, Teaching English to Speakers of Other Languages 6 - 12	7/1/2016	6/30/2021
SL	Morales	Anatalio	SPED - Mild/Moderate K - 12, Social Studies 6 - 12	7/1/2016	6/30/2021
SL	Morgan	Mary Lou	Elementary Education K - 6, Special Education K - 12	7/1/2016	6/30/2021
SL	Morgenstein	Jessica	Elementary Education K - 6	7/1/2016	6/30/2021
SL	Morikami	Staci	Elementary Education K - 6	7/1/2016	6/30/2021
SL	Muromoto	Lorna	Physical Education K - 12	7/1/2016	6/30/2021
SL	Murphioka	Marybeth	Social Studies 6 - 12	7/1/2016	6/30/2021
SL	Murray	Peter	Art 6 - 12	7/1/2016	6/30/2021
SL	Nagaishi	Gary	Elementary Education K - 6	7/1/2016	6/30/2021
SL	Nahuina	Mindy	Elementary Education K - 6, Social Studies 6 - 8	7/1/2016	6/30/2021
SL	Naito-Hata	Lori Ann	Elementary	7/1/2016	6/30/2021

			Education K - 6		
SL	Nakagawa	Alan	Science 6 - 12	7/1/2016	6/30/2021
SL	Nakakura	Heather	Science 6 - 12	7/1/2016	6/30/2021
SL	Nakamoto	Leighton	Health K - 12	7/1/2016	6/30/2021
SL	Nakamoto	Leighton	School Counselor K - 12	7/1/2016	6/30/2021
SL	Nakamura	Lisa Ann	Elementary Education K - 6	7/1/2016	6/30/2021
SL	Nakamura	Matthew	Elementary Education K - 6, School Counselor K - 6	7/1/2016	6/30/2021
SL	Nakamura	Barry	Elementary Education K - 6	7/1/2016	6/30/2021
SL	Nakano	Calvin	Elementary Education K - 6	7/1/2016	6/30/2021
SL	Nakasone-Pagaoa	Vicky	English 6 - 12	7/1/2016	6/30/2021
SL	Nakayama	Colleen	Teaching English to Speakers of Other Languages K - 12	7/1/2016	6/30/2021
SL	Naki	Stacey	Elementary Education K - 6, Music K - 12	7/1/2016	6/30/2021
SL	Nakoa	Diane	English 6 - 12	7/1/2016	6/30/2021
SL	Nesmith	David	SPED - Mild/Moderate K - 12	7/1/2016	6/30/2021
SL	Niitani	Suzanne	Elementary Education K - 6, Special Education K - 12	7/1/2016	6/30/2021
SL	Nikora	Marcus	School Counselor K - 12	7/1/2016	6/30/2021
SL	Nishimura	Coreen	Elementary Education K - 6	7/1/2016	6/30/2021
SL	Nishimura	Kevin	Elementary Education K - 6	7/1/2016	6/30/2021
SL	Niutupuivaha	Janet	CTE-Public and Human Services 6 - 12	7/1/2016	6/30/2021
SL	Nobre	Maria	Elementary Education K - 6, SPED - Mild/Moderate K - 12	7/1/2016	6/30/2021
SL	Noda	Karen	Elementary Education K - 6	7/1/2016	6/30/2021
SL	Nonaka	Stephanie	SPED -	7/1/2016	6/30/2021

			Mild/Moderate K - 12		
SL	Nunn	Kevin	Elementary Education K - 6, English 6 - 8, SPED - Mild/Moderate K - 12, Science 6 - 8, Social Studies 6 - 8	7/1/2016	6/30/2021
SL	OConnor	Michael	Elementary Education K - 6	7/1/2016	6/30/2021
SL	Ogata	Cindy	School Counselor 6 - 12, Science 6 - 12	7/1/2016	6/30/2021
SL	Ogata	Russell	Health K - 12	7/1/2016	6/30/2021
SL	Ogawa	Jean	Elementary Education K - 6	7/1/2016	6/30/2021
SL	Okada	Brian	Mathematics 6 - 12	7/1/2016	6/30/2021
SL	Okai	Joan	Science 6 - 12	7/1/2016	6/30/2021
SL	Okano	Kari	Elementary Education K - 6	7/1/2016	6/30/2021
SL	Okazaki	Lynn	Japanese 6 - 12, Social Studies 6 - 12	7/1/2016	6/30/2021
SL	Okumura	Kathleen	Elementary Education K - 6	7/1/2016	6/30/2021
SL	Omori-Kudo	Renee	Elementary Education K - 6	7/1/2016	6/30/2021
SL	Ornellas	Richard	Special Education 6 - 8	7/1/2016	6/30/2021
SL	Oshiro	Jamie	Elementary Education K - 6	7/1/2016	6/30/2021
SL	Oshiro	Jeffrey	Music K - 12	7/1/2016	6/30/2021
SL	Oshita	Christine	Elementary Education K - 6	7/1/2016	6/30/2021
SL	Pabre	Dino	Physical Education K - 12	7/1/2016	6/30/2021
SL	Pagala	Jun	CTE-Industrial and Engineering Technology 6 - 12	7/1/2016	6/30/2021
SL	Palakiko	Mahealani	Elementary Education K - 6, Special Education K - 6	7/1/2016	6/30/2021
SL	Paleka	Catherine Lei	Music K - 12	7/1/2016	6/30/2021
SL	Paman	Leeann	Elementary	7/1/2016	6/30/2021

			Education K - 6		
SL	Pang	Kennison	Elementary Education K - 6	7/1/2016	6/30/2021
SL	Pang	Laurella	Elementary Education K - 6, SPED - Severe/Profound K - 12, Special Education K - 12	7/1/2016	6/30/2021
SL	Parong	La Yanesa	Early Childhood Education PK - 3	7/1/2016	6/30/2021
SL	Pascual	Karen	Elementary Education K - 6	7/1/2016	6/30/2021
SL	Patton	Kenneth	SPED - Mild/Moderate 6 - 12	7/1/2016	6/30/2021
SL	Paulo-Hirai	Kathleen	SPED - Mild/Moderate K - 12	7/1/2016	6/30/2021
SL	Paulsen	Melissa	English 6 - 12	7/1/2016	6/30/2021
SL	Peel	Elizabeth	School Librarian K - 12	7/1/2016	6/30/2021
SL	Penwell	Kathryn	SPED - Mild/Moderate K - 12, Social Studies 6 - 12	7/1/2016	6/30/2021
SL	Pereida	Teresa	English 6 - 12	7/1/2016	6/30/2021
SL	Pereira	Teresita	Art K - 12	7/1/2016	6/30/2021
SL	Perez	Crisoforo	School Counselor K - 12, Social Studies 6 - 12	7/1/2016	6/30/2021
SL	Perry	Elyson	SPED - Deaf/Hard of Hearing K - 12	7/1/2016	6/30/2021
SL	Pescaia	Victoria	CTE-Industrial and Engineering Technology 6 - 12, SPED - Mild/Moderate K - 12	7/1/2016	6/30/2021
SL	Pickett	Rebecca	CTE-Business 6 - 12, English 6 - 12	7/1/2016	6/30/2021
SL	Pila	Michael	CTE-Business 6 - 12	7/1/2016	6/30/2021
SL	Pilapil-Murphy	Rowena	Speech 6 - 12, Teaching English to Speakers of Other Languages	7/1/2016	6/30/2021

			K - 12		
SL	Poell	Laura	Special Education K - 12	7/1/2016	6/30/2021
SL	Polloi	Jeremy	Elementary Education K - 6, Mathematics 6 - 8	7/1/2016	6/30/2021
SL	Polloi	Sarah	English 6 - 12	7/1/2016	6/30/2021
SL	Pond	Angela	Science 6 - 12	7/1/2016	6/30/2021
SL	Powell	Steven	Special Education K - 12	7/1/2016	6/30/2021
SL	Primacio	Shaun	Science 6 - 12, Science 6 - 8	7/1/2016	6/30/2021
SL	Provost	Ashlie	Elementary Education K - 6	7/1/2016	6/30/2021
SL	Pung	Geri	SPED - Severe/Profound K - 12	7/1/2016	6/30/2021
SL	Queja	Edward	Music K - 12	7/1/2016	6/30/2021
SL	Rabe	Erica	Elementary Education K - 6, Special Education K - 6	7/1/2016	6/30/2021
SL	Ramboyon	Leonard	Elementary Education K - 6	7/1/2016	6/30/2021
SL	Ramiscal	Oscar	Social Studies 6 - 12	7/1/2016	6/30/2021
SL	Ramiscal	Sandy	English 6 - 12	7/1/2016	6/30/2021
SL	Ramos	Donna	School Counselor K - 12	7/1/2016	6/30/2021
SL	Rapanot	Alison	Physical Education K - 12	7/1/2016	6/30/2021
SL	Richards	Joseph	School Counselor 6 - 12, Social Studies 6 - 12	7/1/2016	6/30/2021
SL	Richardson	Brandy	Physical Education K - 12	7/1/2016	6/30/2021
SL	Robinson	Cawley	Elementary Education K - 6, English 6 - 12, English 6 - 8, Reading K - 12	7/1/2016	6/30/2021
SL	Rodriguez	Lani	Social Studies 6 - 12	7/1/2016	6/30/2021
SL	Rogers	River	English 6 - 12	7/1/2016	6/30/2021
SL	Ross	Donna	Mathematics 6 - 12	7/1/2016	6/30/2021

SL	Rossmann	Christina	Mathematics 6 - 12	7/1/2016	6/30/2021
SL	Rowe	Crystal	Elementary Education K - 6, SPED - Mild/Moderate K - 12	7/1/2016	6/30/2021
SL	Ryan	Melissa	Elementary Education K - 6	7/1/2014	6/30/2019
SL	Sagucio	Jennifer	English 6 - 12	7/1/2016	6/30/2021
SL	Sakai-Fontana	Maegan	Elementary Education K - 6	7/1/2016	6/30/2021
SL	Sakai-Kawada	Toni Jean	School Counselor 6 - 12	7/1/2016	6/30/2021
SL	Sakamoto	Alson	Social Studies 6 - 12	7/1/2016	6/30/2021
SL	Sakamoto	Christy	Elementary Education K - 6	7/1/2016	6/30/2021
SL	Sako	Wendy	Elementary Education K - 6	7/1/2016	6/30/2021
SL	Salas-Selem	Ashlie	Elementary Education K - 6, SPED - Mild/Moderate K - 12	7/1/2016	6/30/2021
SL	Salvador	Heidi	Elementary Education K - 6	7/1/2016	6/30/2021
SL	Samsonas	Patrick	Special Education K - 12	7/1/2016	6/30/2021
SL	Sansone	Gena	English 6 - 12, School Librarian K - 12	7/1/2016	6/30/2021
SL	Sato	Mari	Elementary Education K - 6	7/1/2016	6/30/2021
SL	Sato	Kris	Elementary Education K - 6, Special Education K - 12	7/1/2016	6/30/2021
SL	Sayegusa	Carey	Elementary Education K - 6, SPED - Mild/Moderate K - 12	7/1/2016	6/30/2021
SL	Schellhammer	Scott	Science 6 - 12	7/1/2016	6/30/2021
SL	Schmitt	Traci Ann	Elementary Education K - 6	7/1/2016	6/30/2021
SL	Schultz	Clinton	Hawaiian Language 6 - 12	7/1/2016	6/30/2021
SL	Scott	Joanne	Elementary Education K - 6	7/1/2016	6/30/2021

SL	Seifers	Nancy	Art K - 12, Elementary Education K - 6, School Counselor K - 12	7/1/2016	6/30/2021
SL	Seki	Jennifer	Science 6 - 12	7/1/2016	6/30/2021
SL	Sen	Clarice	Elementary Education K - 6	7/1/2016	6/30/2021
SL	Serrao	Susan	Elementary Education K - 6, Special Education K - 12	7/1/2016	6/30/2021
SL	Seta	Elden	Music K - 12	7/1/2016	6/30/2021
SL	Seu	Laurieann	SPED - Severe/Profound K - 12	7/1/2016	6/30/2021
SL	Severson	Carlos	Science 6 - 12	7/1/2016	6/30/2021
SL	Shafer	Catherine	Social Studies 6 - 12	7/1/2016	6/30/2021
SL	Shigezawa	Tammy	Elementary Education K - 6	7/1/2016	6/30/2021
SL	Shimamoto	Monique	Elementary Education K - 6	7/1/2016	6/30/2021
SL	Shimmon	Sandra Jo	School Counselor K - 12	7/1/2016	6/30/2021
SL	Shinagawa	Tiffany	Elementary Education K - 6	7/1/2016	6/30/2021
SL	Shinno	Kimberly	Elementary Education K - 6, SPED - Mild/Moderate K - 12, SPED - Severe/Profound K - 12	7/1/2016	6/30/2021
SL	Shiroma	Jo-Ann	Elementary Education K - 6	7/1/2016	6/30/2021
SL	Silva	Anita	Elementary Education K - 6	7/1/2016	6/30/2021
SL	Silva	Gerlynn	School Counselor K - 12	7/1/2016	6/30/2021
SL	Silva	Mary	Elementary Education K - 6	7/1/2016	6/30/2021
SL	Sinenci	Shane	SPED - Mild/Moderate K - 12	7/1/2016	6/30/2021
SL	Smith	Rebecca	Elementary Education K - 6, English 6 - 12, English 6 - 8,	7/1/2016	6/30/2021

			Teaching English to Speakers of Other Languages K - 12		
SL	Snell-Quirit	Dayne	Elementary Education K - 6	7/1/2016	6/30/2021
SL	Snyder	Matthew	Physical Education K - 12	7/1/2016	6/30/2021
SL	Soekias	Mira	Teaching English to Speakers of Other Languages K - 12	7/1/2016	6/30/2021
SL	Solt	Victor	English 6 - 12	7/1/2016	6/30/2021
SL	Soma	Elissa	SPED - Mild/Moderate K - 12	7/1/2016	6/30/2021
SL	Sopher	Dania	Elementary Education K - 6	7/1/2016	6/30/2021
SL	Spaulding	Teresa	Elementary Education K - 6	7/1/2016	6/30/2021
SL	Spurrier	Garth	Social Studies 6 - 12	7/1/2016	6/30/2021
SL	Stafford	Crystal	Science 6 - 12	7/1/2016	6/30/2021
SL	Starbuck	Hannibal	Science 6 - 12	7/1/2016	6/30/2021
SL	Stephenson	William	Science 6 - 12	7/1/2016	6/30/2021
SL	Stibbard	Melissa	Elementary Education K - 6	7/1/2016	6/30/2021
SL	Stomber	Alice	Early Childhood Education PK - 3, Elementary Education K - 6	7/1/2016	6/30/2021
SL	Stonehill	Inger	English 6 - 12, SPED - Mild/Moderate K - 12	7/1/2016	6/30/2021
SL	Stuart	Kimberlee	Elementary Education K - 6, Science 6 - 12	7/1/2016	6/30/2021
SL	Sueoka	Jennifer	SPED - Mild/Moderate K - 12	7/1/2016	6/30/2021
SL	Sugiyama	Shari	CTE-Business 6 - 12, Elementary Education K - 6	7/1/2016	6/30/2021
SL	Sullivan	Steven	Mathematics 6 - 12, Science 6 - 12	7/1/2016	6/30/2021
SL	Sumida	Corey	Mathematics 6 - 12, Mathematics	7/1/2016	6/30/2021

			6 - 8		
SL	Sumida	Kimberly	Elementary Education K - 6	7/1/2016	6/30/2021
SL	Tada	Karyn	CTE-Public and Human Services 6 - 12	7/1/2016	6/30/2021
SL	Takahashi	Nylen	English 6 - 12	7/1/2016	6/30/2021
SL	Takara	Cindy	CTE-Business 6 - 12	7/1/2016	6/30/2021
SL	Takemoto	Cher	Art K - 12	7/1/2016	6/30/2021
SL	Takiguchi	Kathy	Elementary Education K - 6	7/1/2016	6/30/2021
SL	Talioaga	Corena	CTE-Industrial and Engineering Technology 6 - 12	7/1/2016	6/30/2021
SL	Talley	Susan	Elementary Education K - 6	7/1/2016	6/30/2021
SL	Tam	Jeff	Art 6 - 12	7/1/2016	6/30/2021
SL	Tamayo	Miriam	Elementary Education K - 6	7/1/2016	6/30/2021
SL	Tanaka	Spike	Social Studies 6 - 12	7/1/2016	6/30/2021
SL	Tanaka	Erik	SPED - Mild/Moderate K - 12, School Counselor K - 12	7/1/2016	6/30/2021
SL	Taniguchi	Ernest	Music K - 12	7/1/2016	6/30/2021
SL	Tashiro	Wendell	CTE-Industrial and Engineering Technology 6 - 12	7/1/2016	6/30/2021
SL	Teramae	Ann	Elementary Education K - 6	7/1/2015	6/30/2020
SL	Teramoto	Dorothy	Elementary Education K - 6	7/1/2016	6/30/2021
SL	Terhune	Maya	Early Childhood Education PK - 3	7/1/2016	6/30/2021
SL	Teves	Jennifer	Elementary Education K - 6, Mathematics 6 - 8	7/1/2016	6/30/2021
SL	Toguchi	Miharu	Elementary Education K - 6	7/1/2016	6/30/2021
SL	Tom	Mark	SPED - Mild/Moderate K - 12	7/1/2016	6/30/2021
SL	Toyama	Marsha	Elementary	7/1/2016	6/30/2021

			Education K - 6		
SL	Travalino	Candace	Elementary Education K - 6	7/1/2016	6/30/2021
SL	Tsujioka	Amy	Art 6 - 12, Elementary Education K - 6	7/1/2016	6/30/2021
SL	Tsukayama	Blaine	Social Studies 6 - 12	7/1/2016	6/30/2021
SL	Tucker	Sutton	English 6 - 12	7/1/2016	6/30/2021
SL	Tupper	Marjorie	Elementary Education K - 6	7/1/2016	6/30/2021
SL	Uchimura	Lori	Elementary Education K - 6	7/1/2016	6/30/2021
SL	Uetake	Lori-Ann	Mathematics 6 - 12	7/1/2016	6/30/2021
SL	Uyeda	Kevin	Elementary Education K - 6	7/1/2016	6/30/2021
SL	Uyeda	Raena	Elementary Education K - 6, SPED - Mild/Moderate K - 12	7/1/2016	6/30/2021
SL	Uyeno	Terry	Physical Education K - 12, SPED - Mild/Moderate K - 12	7/1/2016	6/30/2021
SL	Valente	Joseph	CTE-Natural Resources 6 - 12	7/1/2016	6/30/2021
SL	Vaughn	Deanna	Special Education K - 12	7/1/2016	6/30/2021
SL	Viernes	Michael	CTE-Business 6 - 12	7/1/2016	6/30/2021
SL	Villanueva	Ariel	CTE-Industrial and Engineering Technology 6 - 12	7/1/2016	6/30/2021
SL	Wada	Jennifer	Elementary Education K - 6	7/1/2016	6/30/2021
SL	Walsh	Cynthia	Social Studies 6 - 12	7/1/2016	6/30/2021
SL	Walton	Pamela	Elementary Education K - 6, SPED - Mild/Moderate K - 12	7/1/2016	6/30/2021
SL	Watanabe	Zachary	Social Studies 6 - 12	7/1/2016	6/30/2021
SL	Watanuki	Lane	Physical Education K - 12	7/1/2016	6/30/2021

SL	Watase	Jon	School Counselor K - 12	7/1/2016	6/30/2021
SL	Weida	Brian	Elementary Education K - 6, Mathematics 6 - 8	7/1/2016	6/30/2021
SL	Wells	Wendy	CTE-Public and Human Services 6 - 12	7/1/2016	6/30/2021
SL	Werkmeister	Cindy	Social Studies 6 - 12	7/1/2016	6/30/2021
SL	Westenhaver	Mindy	English 6 - 12	7/1/2016	6/30/2021
SL	Whitten	Jay	SPED - Mild/Moderate K - 12	7/1/2016	6/30/2021
SL	Williams	Erin	English 6 - 12	7/1/2016	6/30/2021
SL	Wilmington	Pualani	Elementary Education K - 6	7/1/2016	6/30/2021
SL	Wilson	David	Mathematics 6 - 8, Physical Education K - 12	7/1/2016	6/30/2021
SL	Wolf	Heiki	Art K - 12	7/1/2016	6/30/2021
SL	Yagi	Lisa	Elementary Education K - 6	7/1/2016	6/30/2021
SL	Yamada	Scott	SPED - Mild/Moderate K - 12	7/1/2016	6/30/2021
SL	Yamamoto	Myles	CTE-Industrial and Engineering Technology 6 - 12	7/1/2016	6/30/2021
SL	Yamauchi	Agnes	School Counselor K - 12, Science 6 - 12	7/1/2016	6/30/2021
SL	Yasuhara	Herbert	Physical Education K - 12	7/1/2016	6/30/2021
SL	Yeung	Treena	Elementary Education K - 6	7/1/2016	6/30/2021
SL	Yonemura	Raymond	School Counselor K - 12	7/1/2016	6/30/2021
SL	Yorkston	Malcolm	Elementary Education K - 6	1/1/2016	6/30/2021
SL	Yoshida	Sheri	School Counselor K - 12	7/1/2016	6/30/2021
SL	Yoshikawa	Sandra	Elementary Education K - 6	7/1/2016	6/30/2021
SL	Yoshioka	Brad	Social Studies 6 - 12	7/1/2016	6/30/2021
SL	Yoshioka	Deanne	Elementary	7/1/2016	6/30/2021

			Education K - 6		
SL	Yoshizaki	Lynn	Science 6 - 12	7/1/2016	6/30/2021
SL	You	Marisa	Elementary Education K - 6	7/1/2016	6/30/2021
SL	Young	Traci	Elementary Education K - 6, Social Studies 6 - 8	7/1/2016	6/30/2021
SL	Yukimura	David	Music K - 12, School Librarian K - 12	8/1/2016	6/30/2022
SL	Yund	Adam	Art K - 12, SPED - Severe/Profound 6 - 12, SPED - Severe/Profound K - 6	7/1/2016	6/30/2021
SL	Yung	Amber	SPED - Mild/Moderate K - 12	7/1/2016	6/30/2021
SL	Zukeran-Fujioka	Sandy	Elementary Education K - 6	7/1/2016	6/30/2021
			Emergency Hire		
Type	Last Name	First Name	Teaching Fields	Effective Date	Expiration Date
EH	Alvarez	Heidi	Emergency Hire	7/1/2016	6/30/2017
EH	Armstrong	Christina	Emergency Hire	7/1/2016	6/30/2017
EH	Bacon	Georgette	Emergency Hire	7/1/2016	6/30/2017
EH	Beckman	Pablo	Emergency Hire	7/1/2016	6/30/2017
EH	Horwitz	Cory	Emergency Hire	7/1/2016	6/30/2017
EH	Kam	Howard	Emergency Hire	7/1/2016	6/30/2017
EH	Lindberg	Nanna	Emergency Hire	7/1/2016	6/30/2017
EH	Napoleon	Taryn	Emergency Hire	7/1/2016	6/30/2017
EH	Panui	Kerry	Emergency Hire	7/1/2016	6/30/2017
EH	Ralat Cruz	Sandra	Emergency Hire	7/1/2016	6/30/2017
EH	Rulloda	Ricky	Emergency Hire	7/1/2016	6/30/2017
EH	Steele	Bob	Emergency Hire	7/1/2016	6/30/2017
EH	Whistler	Bernadette	Emergency Hire	7/1/2016	6/30/2017
EH	Adams	Gaison	Emergency Hire	7/1/2016	6/30/2017
EH	Aiwohi	Kaapuni	Emergency Hire	7/1/2016	6/30/2017
EH	Ancheta	Germaine Aleena	Emergency Hire	7/1/2016	6/30/2017
EH	Anderson	Dawn	Emergency Hire	7/1/2016	6/30/2017
EH	Baez Calonge	Azalia	Emergency Hire	7/1/2016	6/30/2017
EH	Balangitao	Michael	Emergency Hire	7/1/2016	6/30/2017
EH	Bell	Rachel	Emergency Hire	7/1/2016	6/30/2017
EH	Berry	Bethany	Emergency Hire	7/1/2016	6/30/2017
EH	Billings	Keri	Emergency Hire	7/1/2016	6/30/2017

EH	Bounos	Rockwell	Emergency Hire	7/1/2016	6/30/2017
EH	Calello	Peter	Emergency Hire	7/1/2016	6/30/2017
EH	Cardone	Cecilia	Emergency Hire	7/1/2016	6/30/2017
EH	Carnate	Alnor	Emergency Hire	7/1/2016	6/30/2017
EH	Carver	Jeannine	Emergency Hire	7/1/2016	6/30/2017
EH	Charles	Yavette	Emergency Hire	7/1/2016	6/30/2017
EH	Chen	Jiao	Emergency Hire	7/1/2016	6/30/2017
EH	Cofer	Ashley	Emergency Hire	7/1/2016	6/30/2017
EH	Coleon	Joshua	Emergency Hire	7/1/2016	6/30/2017
EH	Comet	Rhonda	Emergency Hire	7/1/2016	6/30/2017
EH	Davis	Shauna	Emergency Hire	7/1/2016	6/30/2017
EH	Emerson	Henrietta	Emergency Hire	7/1/2016	6/30/2017
EH	Fernandez	Drew	Emergency Hire	7/1/2016	6/30/2017
EH	Flores	Kalani	Emergency Hire	7/1/2016	6/30/2017
EH	Galan	Brenda	Emergency Hire	7/1/2016	6/30/2017
EH	Gamez	Evelyn	Emergency Hire	7/1/2016	6/30/2017
EH	Gil-Casas	Mariah	Emergency Hire	7/1/2016	6/30/2017
EH	Hagi	Nicole	Emergency Hire	7/1/2016	6/30/2017
EH	Harbin	Angie	Emergency Hire	7/1/2016	6/30/2017
EH	Harwell	Patricia	Emergency Hire	7/1/2016	6/30/2017
EH	Hernandez	Karina	Emergency Hire	7/1/2016	6/30/2017
EH	Hidano	Drake	Emergency Hire	7/1/2016	6/30/2017
EH	Hirokawa	Kealohapauole	Emergency Hire	7/1/2016	6/30/2017
EH	Ichimaru	George	Emergency Hire	7/1/2016	6/30/2017
EH	Kaeo-Fatokun	Chanel	Emergency Hire	7/1/2016	6/30/2017
EH	Kameoka	Vanessa	Emergency Hire	7/1/2016	6/30/2017
EH	Kawano	Lindsay	Emergency Hire	7/1/2016	6/30/2017
EH	Keenan	Mara	Emergency Hire	7/1/2016	6/30/2017
EH	Klein	Candice	Emergency Hire	7/1/2016	6/30/2017
EH	Kohatsu	Eldon	Emergency Hire	7/1/2016	6/30/2017
EH	Kotaki	Donna	Emergency Hire	7/1/2016	6/30/2017
EH	Laidlaw	Kelly	Emergency Hire	7/1/2016	6/30/2017
EH	Luke	Livaudais	Emergency Hire	7/1/2016	6/30/2017
EH	Matsui	Alena	Emergency Hire	7/1/2016	6/30/2017
EH	McCabe	Angela	Emergency Hire	7/1/2016	6/30/2017
EH	McIntosh	Harry	Emergency Hire	7/1/2016	6/30/2017
EH	McKenzie	Moniz	Emergency Hire	7/1/2016	6/30/2017
EH	McKnight	Joshua	Emergency Hire	7/1/2016	6/30/2017
EH	Meyers	Kristel	Emergency Hire	7/1/2016	6/30/2017
EH	Miller	Kristen	Emergency Hire	7/1/2016	6/30/2017
EH	Momoa	Christen	Emergency Hire	7/1/2016	6/30/2017
EH	Morris	Ann	Emergency Hire	7/1/2016	6/30/2017
EH	Myers	Sade	Emergency Hire	7/1/2016	6/30/2017
EH	Naihe	lawaiia	Emergency Hire	7/1/2016	6/30/2017

EH	Nakamoto	Traci	Emergency Hire	7/1/2016	6/30/2017
EH	Nam	Joshua	Emergency Hire	7/1/2016	6/30/2017
EH	Nguyen	Tuyet	Emergency Hire	7/1/2016	6/30/2017
EH	Nitta	Glenelle	Emergency Hire	7/1/2016	6/30/2017
EH	Oda	Donovan	Emergency Hire	7/1/2016	6/30/2017
EH	Oshiro	Anthony	Emergency Hire	7/1/2016	6/30/2017
EH	Ota	Farin	Emergency Hire	7/1/2016	6/30/2017
EH	Ozaki	Crystal	Emergency Hire	7/1/2016	6/30/2017
EH	Pascua	Christina	Emergency Hire	7/1/2016	6/30/2017
EH	Peck	Sharon	Emergency Hire	7/1/2016	6/30/2017
EH	Pencak	Natalie	Emergency Hire	7/1/2016	6/30/2017
EH	Qualey	Chelsea	Emergency Hire	7/1/2016	6/30/2017
EH	Ragsac	Geraldine	Emergency Hire	7/1/2016	6/30/2017
EH	Russo	Brigitte	Emergency Hire	7/1/2016	6/30/2017
EH	Ryan	Judith	Emergency Hire	7/1/2016	6/30/2017
EH	Slattery	Daniel	Emergency Hire	7/1/2016	6/30/2017
EH	Souza	Bernadine	Emergency Hire	7/1/2016	6/30/2017
EH	Tafao	Faasaviliga	Emergency Hire	7/1/2016	6/30/2017
EH	Takabuki	Todd	Emergency Hire	7/1/2016	6/30/2017
EH	Tango	Tryson	Emergency Hire	7/1/2016	6/30/2017
EH	Tom	Shantell-Tiare	Emergency Hire	7/1/2016	6/30/2017
EH	Toma	Kevin	Emergency Hire	7/1/2016	6/30/2017
EH	Tubania	Kimberly	Emergency Hire	7/1/2016	6/30/2017
EH	Uluave	Kiana	Emergency Hire	7/1/2016	6/30/2017
EH	Uluave	Wendy	Emergency Hire	7/1/2016	6/30/2017
EH	Ventura	Jennifer	Emergency Hire	7/1/2016	6/30/2017
EH	Villaruz	Kathryne Mei	Emergency Hire	7/1/2016	6/30/2017
EH	Walk	Jamie	Emergency Hire	7/1/2016	6/30/2017
EH	Willis	Kane	Emergency Hire	7/1/2016	6/30/2017
EH	Yamamoto	Marissa	Emergency Hire	7/1/2016	6/30/2017
			Special Permit		
Type	Last Name	First Name	Teaching Fields	Effective Date	Expiration Date
SP	Feiteira	Catherine	CTE-Permit	7/1/2016	6/30/2017
SP	Palakiko	Mark	CTE-Permit	7/1/2016	6/30/2017
SP	Von Weckmann	Paul	CTE-Permit	7/1/2016	6/30/2017